

**HD**

**Material**

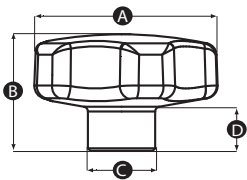
Aluminium

**Finish**

Highly polished

**Thread**

Machined thread



Part No.	A	B	C	D	Thread size
12708Z	40	24	14	8	M6
12709V	40	24	14	8	M8
12710R	50	31	18	10	M8
12711Y	50	31	18	10	M10
12712U	60	39	20	14	M10
12713Q	60	39	20	14	M12