

**Material**

Duroplast

**Standard colour**

Black

**Finish**

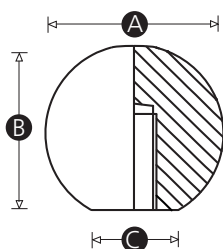
Gloss finish

**Thread**

Moulded thread

**Thread diameter**

Imperial and metric sizes



Part No.	A	B	C	Thread size (Metric)	Thread size (Imperial)
2100W	16	15	8	M4	-
2101S	16	15	8	M5	-
2102P	16	15	8	M6	-
300P	19	17	12	M4	-
2108X	19	17	12	M5	-
303Q	19	17	12	M6	-
321W	25	23	14	M6	-
322P	25	23	14	M8	-
320S	25	23	14	M10	-
356T	32	30	15	M6	-
359U	32	30	15	M8	-
353S	32	30	15	M10	-
355P	32	30	15	M12	-
387W	38	36	17	M6	-
388P	38	36	17	M8	-

*Continued overleaf »*

« Continued from overleaf

Part No.	A	B	C	Thread size (Metric)	Thread size (Imperial)
385P	38	36	17	M10	-
386S	38	36	17	M12	-
404U	44	43	13	M10	-
405Y	44	43	13	M12	-
406R	44	43	13	M16	-
3202W	51	49	20	M10	-
420S	51	49	20	M12	-
421W	51	49	20	M16	-
2183U	51	49	20	M20	-
295V	19	17	12	-	1/4 W
311P	25	23	14	-	1/4 W
348U	32	30	15	-	5/16 W
342S	32	30	15	-	3/8 W
379X	38	36	15	-	3/8 W
375S	38	36	17	-	1/2 W
401T	44	43	13	-	3/8 W
398W	44	43	13	-	1/2 W
414Q	51	49	20	-	1/2 W
419P	51	49	20	-	5/8 W