

Rencol

COMPONENTS

INDUSTRIAL MANUFACTURING SINCE 1923



Rencol

COMPONENTS

INDUSTRIAL MANUFACTURING
SINCE 1923

Rencol's flexible manufacturing capabilities, engineering expertise, global supply chain and market knowledge allow us to develop cost-effective product solutions that exceed our customers' expectations.

Who we are

In the early twentieth century Rencol developed engineered plastic solutions ranging from electric car batteries and recharging stations to the plastic "Joylight" internal combustion engine.

By the 1970s our focus on components had emerged and the Rencol name became synonymous with high quality plastic knobs, handles and handwheels.

Today, we continue to grow, adapt and innovate:

- Our product range is extensive, industry-standard and growing.
- Our manufacturing partners are in key international locations, each chosen for their expertise, compatibility with our values and cost effectiveness.
- Our distribution network is worldwide and expanding.
- Our global supply chain has been in successful continuous operation for over a decade.

We are here to help

Exceptional customer service is central to our company philosophy. Our customer service team, on-site engineers, product designers and supply chain experts are here to advise and assist at all stages of the purchase and fulfilment process.

Call or email to:

- Check price and availability
- Make technical queries and request product advice
- Request samples
- Place and progress your order
- Request CAD drawings

Visit our website to:

- Request a quotation
- View product specifications and MOQs
- Find your local distributor
- Request CAD drawings
- Request a catalogue

Tel: +44 (0) 117 916 0090

Fax: +44 (0) 117 982 2235

Email: sales@rencol.com

Website: www.rencol.com

Office opening hours:

Monday to Friday

8.30 AM to 5.00 PM (GMT)



*Nick Dowden, 30 years with Rencol.
Customer Service Manager*

Index

Technical Specifications & Key

Material performance data, tolerances, colour options, quality certifications and product icon key.



Page 4

Model 01F CH Female Indexed Clamping Handle

Page 5



Model 01M CH Male Indexed Clamping Handle

Page 6



Model 02F CH Female Ergonomic Indexed Clamping Handle

Page 7-8



Model 02M CH Male Ergonomic Indexed Clamping Handle

Page 9-10



Model 03F CH Female Indexed Clamping Handle

Page 11



Model 03M CH Male Indexed Clamping Handle

Page 12



Model 04F CH Female Die Cast Zinc Indexed Clamping Handle

Page 13-14



Model 04M CH Male Die Cast Zinc Indexed Clamping Handle

Page 15-17



Model 05F CH Female Stainless Steel Indexed Clamping Handle

Page 18



Model 05M CH Male Stainless Steel Indexed Clamping Handle

Page 19-20



Model 05F ATL Female Adjustable Tension Lever

Page 21



Model 05M ATL Male Adjustable Tension Lever

Page 22



Modifications & Custom Components

Custom colours, threads, materials, sizes, finishes, etc.

Page 23



Technical Specifications & Key

Thermoplastic

Material: Nylon 6 + Polypropylene (PP)
Working temperatures: Nylon up to 130°C peak and 80°C continuous use. Polypropylene maximum 70°C.
Resistant to: alcohols, esters, aromatic hydrocarbons, dilute alkalis, ketones, oils, fuels, grease, fats, weatherability (including UV light - excludes coloured Nylon) and salt water.
With PP also avoid halogenated hydrocarbons and flammable materials (can hold static charge).

Reinforced Thermoplastic

Material: Nylon 6 glass filled
Working temperature: up to 180°C peak, 110°C continuous use.
Resistant to: alcohols, esters, aromatic hydrocarbons, dilute alkalis, ketones, oils, fuels, grease, fats, weatherability (including UV light) and salt water.

Duroplast

Material: Phenolic Based Duroplast (PF)
Working temperature: -30°C to 160°C
Resistant to: diluted mineral acids, alcohols, chlorinated hydrocarbons, aromatic hydrocarbons, detergents, grease, oils, weatherability (including UV light). Avoid high pressure or high impact loads (can shatter).

Soft-Touch Mouldings

Material: Polypropylene substrate, TPE over-mould. Rencol has standard parts already available in this design, used particularly extensively in both industrial and special needs market products.

Brass

Material: BS2874 CZ121. Especially recommended for any materials likely to have continued exposure to temperatures below -30°C, where most steel grades become brittle. Also used as a marine grade material when nickel plated.

Zinc Plated Steel

Material: EN1A leaded-bright zinc passivated.

Stainless Steel

Material: Standard grade is 304. For medical, catering or marine use recommended grade is 316 - has high chloride resistance.

Aluminium

Grades are 6061 and A380. Others available on request.

Colours

Colour options include black, red, yellow, green, blue, white and grey. Other colours are available on request. If you would like to see the colours before ordering, samples can be provided free of charge.








Thread Depths

Wherever possible thread depths are a minimum of 1.5 x the diameter of the thread.

Tolerances

In general, our products are produced to the following tolerances:
Bore sizes: $\pm 0.1\text{mm}$ (0.004in)
Outside dimensions: $\pm 0.5\text{mm}$ (0.020in)
Male thread length: $\pm 1\text{mm}$ (0.040in)

Key

-  **Colour options** - RAL colours on request.
-  **Heavy duty** - Particularly hard wearing item.
-  **Stainless steel** - Partly or totally stainless steel.
-  **Fixing from above**
-  **Fixing from below**
-  **Multi component build** - Assembly available.
-  **Soft touch** - TPE over mould. Oil resistant.



Rencol Components is **ISO 9001:2008 Certified**
Our components are **REACH & RoHS Compliant**



Handle material

Reinforced nylon (15% glass filled PA6)

Female insert material

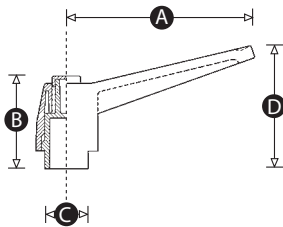
Brass as standard. Stainless steel and zinc plated steel on request. (MOQS apply).

Standard colour combinations

Black handle with red cap.

Options

Also available with caps in red, black, grey, white, blue, green, yellow or orange (MOQs apply). Other handle RAL colours available on request (MOQs apply).



Part No.	A	B	C	D	Thread size	Insert material	Handle + cap colour
11424Y	43	26	12	32	M5	Brass	Black + Red
11425U	43	26	12	32	M6	Brass	Black + Red
11426Q	65	37	15	46	M6	Brass	Black + Red
11427X	65	37	15	46	M8	Brass	Black + Red
11429P	83	46	19	57	M10	Brass	Black + Red
11428T	83	46	19	57	M8	Brass	Black + Red
11431S	104	51	24	68	M12	Brass	Black + Red
11432Z	104	51	24	68	M16	Brass	Black + Red



Handle material

Reinforced nylon (15% glass filled PA6)

Male thread material

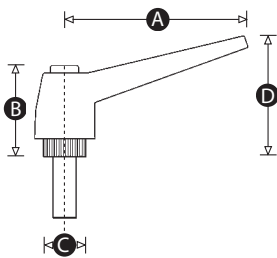
Zinc plated steel as standard. Stainless steel available on request (MOQs apply)

Standard colour combinations

Black handle with red cap.

Options

Also available with caps in red, black, grey, white, blue, green, yellow or orange (MOQs apply). Other handle RAL colours available on request (MOQs apply).



Part No.	A	B	C	D	Thread size	Thread length (mm)	Insert material	Handle + cap colour
11433V	43	26	12	32	M5	15	Steel	Black + Red
11438X	43	26	12	32	M6	25	Steel	Black + Red
11439T	65	37	15	46	M8	20	Steel	Black + Red
11440P	65	37	15	46	M8	30	Steel	Black + Red
11443Z	83	46	19	57	M10	30	Steel	Black + Red
11444V	83	46	19	57	M10	40	Steel	Black + Red
11446Y	104	51	24	68	M12	30	Steel	Black + Red
11450T	104	51	24	68	M16	50	Steel	Black + Red



Handle material

Reinforced nylon (15% glass filled PA6)

Female insert material

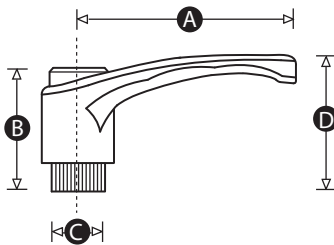
Brass as standard. Stainless steel and zinc plated steel on request. (MOQs apply).

Standard colour combinations

Black handle with red cap, black handle with orange cap, orange handle with grey cap.

Options

Also available with caps in red, black, grey, white, blue, green, yellow or orange (MOQs apply). Other handle RAL colours available on request (MOQs apply).



Part No.	A	B	C	D	Thread size	Insert material	Handle + cap colour
12606P	43	29	12	30	M5	Stainless steel	Black + Orange
12625Q	43	29	12	30	M5	Steel	Black + Orange
12605T	43	29	12	30	M6	Stainless steel	Black + Orange
12624U	43	29	12	30	M6	Steel	Black + Orange
12605T	43	29	12	30	M6	Steel	Black + Red
12604X	65	38	15	44	M6	Stainless steel	Black + Orange
12623Y	65	38	15	44	M6	Steel	Black + Orange
12603Q	65	38	15	44	M8	Stainless steel	Black + Orange
12612Y	65	38	15	44	M8	Steel	Orange + Black
12622R	65	38	15	44	M8	Steel	Black + Orange
12603Q	65	38	15	44	M8	Steel	Black + Red
12602U	83	47	19	54	M8	Stainless steel	Black + Orange
12613U	83	47	19	54	M8	Steel	Orange + Black
12621V	83	47	19	54	M8	Steel	Black + Orange

Continued overleaf »

« Continued from overleaf

Part No.	A	B	C	D	Thread size	Insert material	Handle + cap colour
12601Y	83	47	19	54	M10	Stainless steel	Black + Orange
12614Q	83	47	19	54	M10	Steel	Orange + Black
12620Z	83	47	19	54	M10	Steel	Black + Orange
12600R	83	47	19	54	M12	Stainless steel	Black + Orange
12615X	83	47	19	54	M12	Steel	Orange + Black
12626X	83	47	19	54	M12	Steel	Black + Orange
12620Z	83	47	19	54	M10	Steel	Black + Red
11579U	104	56	24	64	M16	Brass	Black + Black



Handle material

Reinforced nylon (15% glass filled PA6)

Male thread material

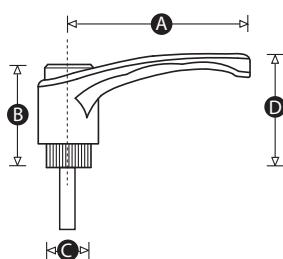
Zinc plated steel as standard. Stainless steel available on request (MOQs apply).

Standard colour combinations

Black handle with red cap, black handle with orange cap, orange handle with grey cap.

Options

Also available with caps in red, black, grey, white, blue, green, yellow or orange (MOQs apply). Other handle RAL colours available on request (MOQs apply).



Part No.	A	B	C	D	Thread size	Thread length (mm)	Insert material	Handle + cap colour
12632V	43	29	12	30	M5	10	Steel	Black + Orange
12633R	43	29	12	30	M5	20	Steel	Orange + Black
12641S	43	29	12	30	M5	20	Steel	Black + Orange
12611R	43	29	12	30	M6	10	Stainless steel	Black + Orange
12631Z	43	29	12	30	M6	10	Steel	Black + Orange
12634Y	43	29	12	30	M6	20	Steel	Orange + Black
12635U	43	29	12	30	M6	30	Steel	Orange + Black
12642Z	43	29	12	30	M6	20	Steel	Black + Orange
12643V	43	29	12	30	M6	30	Steel	Black + Orange
12610V	65	38	15	44	M6	10	Stainless steel	Black + Orange
12609Z	65	38	15	44	M8	15	Stainless steel	Black + Orange
12619S	65	38	15	44	M8	15	Steel	Orange + Black
12630S	65	38	15	44	M8	15	Steel	Black + Orange
12636Q	65	38	15	44	M8	20	Steel	Orange + Black

Continued overleaf »

« Continued from overleaf

Part No.	A	B	C	D	Thread size	Thread length (mm)	Insert material	Handle + cap colour
12637X	65	38	15	44	M8	30	Steel	Orange + Black
12638T	65	38	15	44	M8	40	Steel	Orange + Black
12644R	65	38	15	44	M8	20	Steel	Black + Orange
12645Y	65	38	15	44	M8	30	Steel	Black + Orange
12646U	65	38	15	44	M8	40	Steel	Black + Orange
12608S	83	47	19	54	M10	20	Stainless steel	Black + Orange
12618W	83	47	19	54	M10	20	Steel	Orange + Black
12629W	83	47	19	54	M10	20	Steel	Black + Orange
12639P	83	47	19	54	M10	30	Steel	Orange + Black
12647Q	83	47	19	54	M10	30	Steel	Black + Orange
12607W	83	47	19	54	M10	50	Stainless steel	Black + Orange
12617P	83	47	19	54	M10	50	Steel	Orange + Black
12628P	83	47	19	54	M10	50	Steel	Black + Orange
12640W	83	47	19	54	M12	30	Steel	Orange + Black
12648X	83	47	19	54	M12	30	Steel	Black + Orange
12616T	83	47	19	54	M12	50	Steel	Orange + Black
12627T	83	47	19	54	M12	50	Steel	Black + Orange
11501Y	104	56	24	64	M12	35	Steel	Black + Red
11504X	104	56	24	64	M16	50	Steel	Black + Red

Handle material

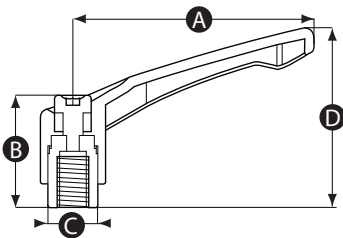
Reinforced nylon (15% glass filled PA6)

Insert material

Chemically blackened steel boss and ratchet with allen key fixing screw. Stainless steel boss on request (MOQs apply).

Handle colours

Black handle as standard. Other RAL colours on request (MOQs apply).



Part No.	A	B	C	D	Thread size	Insert material	Handle Colour
12661P	42	25	10	38	M5	Steel	Black
12662W	42	25	10	38	M6	Steel	Black
12663S	65	31	14	50	M6	Steel	Black
12664Z	65	31	14	50	M8	Steel	Black
12665V	83	36	16	60	M8	Steel	Black
12668U	83	36	16	60	M12	Steel	Black
12666R	83	36	16	60	M10	Steel	Black

Handle material

Reinforced nylon (15% glass filled PA6)

Insert material

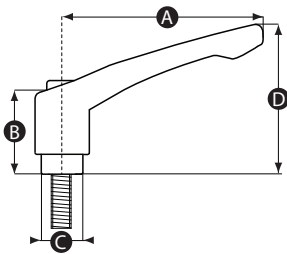
Chemically blackened steel boss and ratchet with allen key fixing screw. Stainless steel boss on request (MOQs apply).

Male thread

Steel as standard. Stainless steel on request (MOQs apply).

Handle colours

Black handle as standard. Other RAL colours on request (MOQs apply).



Part No.	A	B	C	D	Thread size	Thread length (mm)	Insert material	Handle colour
12654V	42	25	10	38	M6	16	Steel	Black
11558Q	42	25	10	38	M6	20	Steel	Black
12655R	42	25	10	38	M6	32	Steel	Black
12656Y	65	31	14	50	M8	16	Steel	Black
11560T	65	31	14	50	M8	20	Steel	Black
12649T	65	31	14	50	M8	25	Steel	Black
12657U	65	31	14	50	M8	32	Steel	Black
11562W	65	31	14	50	M8	40	Steel	Black
12658Q	83	36	16	60	M10	20	Steel	Black
12650P	83	36	16	60	M10	32	Steel	Black
11565V	83	36	16	60	M10	40	Steel	Black
11566R	83	36	16	60	M10	50	Steel	Black
12653Z	83	36	16	60	M12	50	Steel	Black
12659X	83	36	16	60	M12	63	Steel	Black

SS HD

Handle material

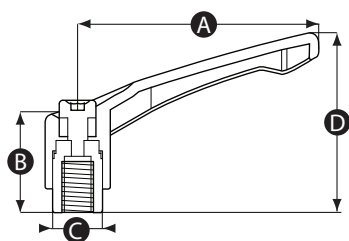
Die cast zinc

Insert material

Chemically blackened steel or stainless steel boss and ratchet with allen key fixing screw.

Handle colours

Black handle as standard. Other RAL colours on request (MOQs apply).



Part No.	A	B	C	D	Thread size	Insert material	Handle Colour
12660T	42	25	10	37	M4	Steel	Black
12054X	42	25	10	37	M5	Steel	Black
12055T	42	25	10	37	M6	Steel	Black
12057W	42	25	10	37	M6	Stainless steel	Black
12058S	65	31	14	49	M6	Steel	Black
12060V	65	31	14	49	M6	Stainless steel	Black
12059Z	65	31	14	49	M8	Steel	Black
12061R	65	31	14	49	M8	Stainless steel	Black
12062Y	78	36	16	57	M8	Steel	Black
12064Q	78	36	16	57	M8	Stainless steel	Black
12063U	78	36	16	57	M10	Steel	Black
12065X	78	36	16	57	M10	Stainless steel	Black
12066T	92	43	19	65	M10	Steel	Black
12068W	92	43	19	65	M10	Stainless steel	Black
12067P	92	43	19	65	M10	Steel	Black

Continued overleaf »

« Continued from overleaf

Part No.	A	B	C	D	Thread size	Insert material	Handle colour
12069S	92	43	19	65	M10	Stainless steel	Black
12070Z	108	51	23	77	M12	Steel	Black
12072R	108	51	23	77	M12	Stainless steel	Black
12071V	108	51	23	77	M16	Steel	Black
12073Y	108	51	23	77	M16	Stainless steel	Black

SS HD

Handle material

Die cast zinc

Insert material

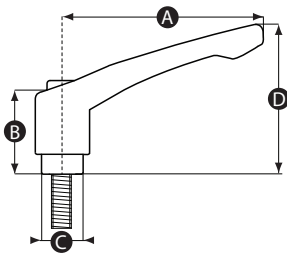
Chemically blackened steel or stainless steel boss and ratchet with allen key fixing screw.

Male thread

Steel or stainless steel.

Handle colours

Black handle as standard. Other RAL colours on request (MOQs apply).



Part No.	A	B	C	D	Thread size	Thread length (mm)	Insert material	Handle colour
12075Q	42	25	10	37	M5	16	Steel	Black
12076X	42	25	10	37	M5	20	Steel	Black
12090W	42	25	10	37	M5	20	Stainless steel	Black
12091S	42	25	10	37	M5	25	Stainless steel	Black
12082V	42	25	10	37	M6	16	Steel	Black
12083R	42	25	10	37	M6	20	Steel	Black
12085U	42	25	10	37	M6	32	Steel	Black
12096U	42	25	10	37	M6	16	Stainless steel	Black
12097Q	42	25	10	37	M6	20	Stainless steel	Black
12099T	42	25	10	37	M6	32	Stainless steel	Black
12104V	65	31	14	49	M6	25	Steel	Black
12105R	65	31	14	49	M6	32	Steel	Black
12118U	65	31	14	49	M6	32	Stainless steel	Black
12119Q	65	31	14	49	M6	40	Stainless steel	Black

Continued overleaf »

« Continued from overleaf

Part No.	A	B	C	D	Thread size	Thread length (mm)	Insert material	Handle colour
12108Q	65	31	14	49	M8	16	Steel	Black
12109X	65	31	14	49	M8	20	Steel	Black
12110T	65	31	14	49	M8	25	Steel	Black
12111P	65	31	14	49	M8	32	Steel	Black
12112W	65	31	14	49	M8	40	Steel	Black
12113S	65	31	14	49	M8	50	Steel	Black
12122P	65	31	14	49	M8	20	Stainless steel	Black
12123W	65	31	14	49	M8	25	Stainless steel	Black
12124S	65	31	14	49	M8	32	Stainless steel	Black
12125Z	65	31	14	49	M8	40	Stainless steel	Black
12126V	65	31	14	49	M8	50	Stainless steel	Black
12128Y	78	36	16	57	M10	20	Steel	Black
12130Q	78	36	16	57	M10	32	Steel	Black
12131X	78	36	16	57	M10	40	Steel	Black
12132T	78	36	16	57	M10	50	Steel	Black
12135S	78	36	16	57	M10	20	Stainless steel	Black
12137V	78	36	16	57	M10	32	Stainless steel	Black
12138R	78	36	16	57	M10	40	Stainless steel	Black
12142X	92	43	19	65	M10	20	Steel	Black
12144P	92	43	19	65	M10	32	Steel	Black
12145W	92	43	19	65	M10	40	Steel	Black
12146S	92	43	19	65	M10	50	Steel	Black
12160R	92	43	19	65	M10	50	Stainless steel	Black
12161Y	92	43	19	65	M10	63	Stainless steel	Black
12151U	92	43	19	65	M12	32	Steel	Black
12152Q	92	43	19	65	M12	40	Steel	Black
12153X	92	43	19	65	M12	50	Steel	Black
12154T	92	43	19	65	M12	63	Steel	Black
12165T	92	43	19	65	M12	32	Stainless steel	Black
12166P	92	43	19	65	M12	40	Stainless steel	Black

Continued on facing page »

« Continued from facing page

Part No.	A	B	C	D	Thread size	Thread length (mm)	Insert material	Handle colour
12167W	92	43	19	65	M12	50	Stainless steel	Black
12168S	92	43	19	65	M12	63	Stainless steel	Black
12171R	108	51	23	77	M16	40	Steel	Black
12176T	108	51	23	77	M16	40	Stainless steel	Black

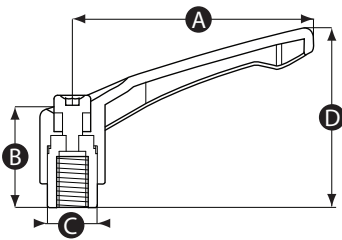
SS HD

Material

Stainless steel - 304

Thread material

Stainless steel - 304



Part No.	A	B	C	D	Thread size
15294Z	42	18	10	34	M6
15293S	42	18	10	34	M5
15296R	65	21	14	44	M8
15295V	65	21	14	44	M6
15297Y	78	24	16	51	M8
15298U	78	24	16	51	M10
15300X	92	28	19	60	M12
15299Q	92	28	19	60	M10
15302P	108	33	23	69	M16
15301T	108	33	23	69	M12

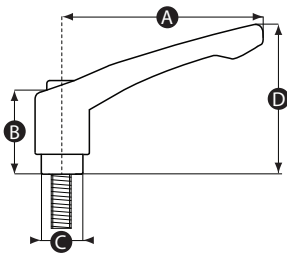
SS HD

Material

Stainless steel - 304

Thread material

Stainless steel - 304



Part No.	A	B	C	D	Thread size	Thread length (mm)
15303W	42	18	10	34	M6	20
15304S	42	18	10	34	M6	32
15305Z	42	18	10	34	M6	40
15306V	65	21	14	44	M8	16
15307R	65	21	14	44	M8	20
15308Y	65	21	14	44	M8	25
15309U	65	21	14	44	M8	32
15310Q	65	21	14	44	M8	40
15311X	65	21	14	44	M8	50
15312T	78	24	16	51	M10	20
15313P	78	24	16	51	M10	32
15314W	78	24	16	51	M10	40
15315S	78	24	16	51	M10	50
15316Z	78	24	16	51	M10	63

Continued overleaf »

« Continued from overleaf

Part No.	A	B	C	D	Thread size	Thread length (mm)
15317V	92	28	19	60	M12	25
15318R	92	28	19	60	M12	32
15319Y	92	28	19	60	M12	40
15320U	92	28	19	60	M12	63
15321Q	108	33	23	69	M16	40

Material

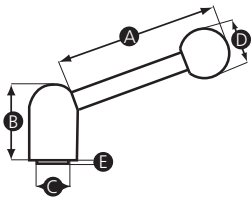
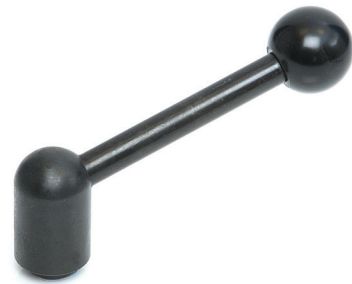
Blackened steel handles with plastic knob

Standard colour

Black

Insert material

Blackened steel



Part No.	A	B	C	D	E	Thread size
11793W	96	42	16	25	4	M8
11789Q	110	48.5	19	32	6	M10

Material

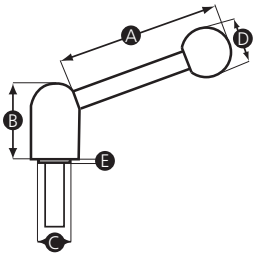
Blackened steel handles with plastic knob

Standard colour

Black

Thread material

Blackened steel



Part No.	A	B	C	D	E	Thread size	Thread length (mm)
11792P	70	33.5	13.5	19	-	M8	25
11790X	96	40	16	25	4	M10	40
11791T	110	48.5	19	32	6	M12	50

Modifications & Custom Components

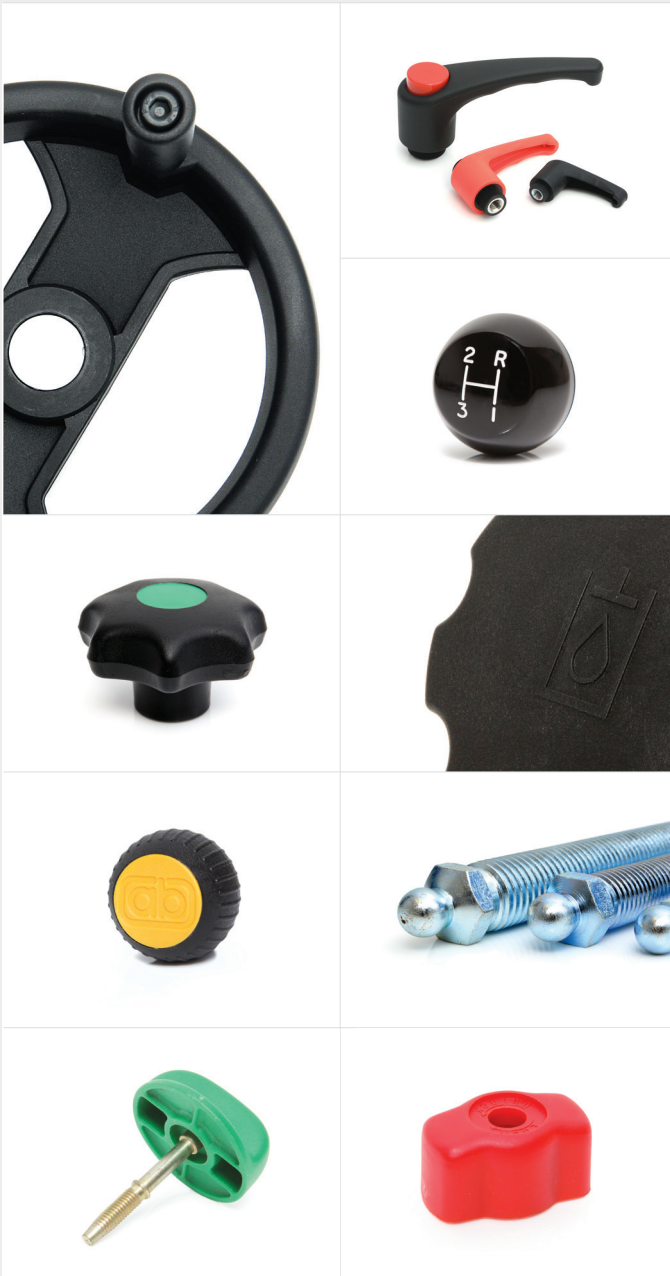
Diverse manufacturing capabilities and experienced on-site technical personnel allows Rencol Components to offer a wide range of product modifications and custom product solutions. We regularly adapt standard components or manufacture custom products to suit our customers' specific requirements. New tooling can be produced quickly and cost effectively with a typical MOQ of just 500 pieces.

Manufacturing Processes

Plastic & Metal Injection Moulding / Die casting / Machining / Forging / Stamping / Rapid Prototyping / 3D Printing

Modifications & Custom Options

Thread size & length / RAL Colours / Engraving / Pad-Printing & Screen-Printing / TPE Over mould / Materials / Finishes / Logos





Rencol COMPONENTS

Head Office (UK):

Unit 2 Avonbridge Trading Estate
Atlantic Road
Avonmouth
Bristol BS11 9QD
United Kingdom

Tel: +44 (0) 117 916 0090

Fax: +44 (0) 117 982 2235

Email: sales@rencol.com

Website: www.rencol.com

Office opening hours:

Monday to Friday
8.30 AM to 5.00 PM (GMT)