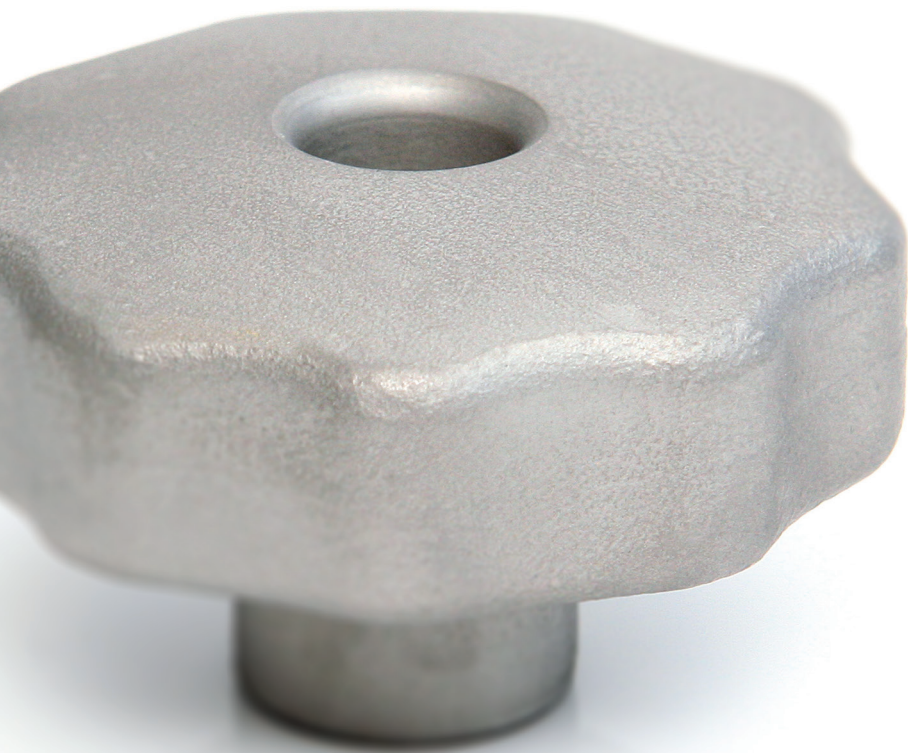


# Rencol

COMPONENTS

*INDUSTRIAL MANUFACTURING SINCE 1923*



# Rencol

## COMPONENTS

INDUSTRIAL MANUFACTURING  
SINCE 1923

*Rencol's flexible manufacturing capabilities, engineering expertise, global supply chain and market knowledge allow us to develop cost-effective product solutions that exceed our customers' expectations.*

## Who we are

In the early twentieth century Rencol developed engineered plastic solutions ranging from electric car batteries and recharging stations to the plastic "Joylight" internal combustion engine.

By the 1970s our focus on components had emerged and the Rencol name became synonymous with high quality plastic knobs, handles and handwheels.

### Today, we continue to grow, adapt and innovate:

- Our product range is extensive, industry-standard and growing.
- Our manufacturing partners are in key international locations, each chosen for their expertise, compatibility with our values and cost effectiveness.
- Our distribution network is worldwide and expanding.
- Our global supply chain has been in successful continuous operation for over a decade.

## We are here to help

Exceptional customer service is central to our company philosophy. Our customer service team, on-site engineers, product designers and supply chain experts are here to advise and assist at all stages of the purchase and fulfilment process.

### Call or email to:

- Check price and availability
- Make technical queries and request product advice
- Request samples
- Place and progress your order
- Request CAD drawings

### Visit our website to:

- Request a quotation
- View product specifications and MOQs
- Find your local distributor
- Request CAD drawings
- Request a catalogue

**Tel:** +44 (0) 117 916 0090

**Fax:** +44 (0) 117 982 2235

**Email:** [sales@rencol.com](mailto:sales@rencol.com)

**Website:** [www.rencol.com](http://www.rencol.com)

### Office opening hours:

Monday to Friday

8.30 AM to 5.00 PM (GMT)



*Nick Dowden, 30 years with Rencol.  
Customer Service Manager*

# Index » Plastic Knobs

## Technical Specifications & Key

Material performance data, tolerances, colour options, quality certifications and product icon key.



Page 10

## Model 01F PK Female Soft Touch Lobe Knob

Page 11



## Model 01M PK Male Soft Touch Lobe Knob

Page 12-13



## Model 01T PK Through Thread Soft Touch Lobe Knob

Page 14



## Model 02F PK Female Lobe Knob

Page 15-16



## Model 02M PK Male Lobe Knob

Page 17-18



## Model 02T PK Through Thread Lobe Knob

Page 19



## Model 03F PK Female Lobe Knob

Page 20



## Model 03M PK Male Lobe Knob

Page 21-22



## Model 03T PK Through Thread Lobe Knob

Page 23



## Model 04F PK Female Lobe Knob

Page 24



## Model 04M PK Male Lobe Knob

Page 25



## Model 05F PK Female Lobe Knob

Page 26



## Model 05M PK Male Lobe Knob

Page 27-28



**Model 05T PK**  
**Through Thread Lobe Knob**

Page 29



**Model 06F PK**  
**Female Lobe Knob**

Page 30



**Model 06M PK**  
**Male Lobe Knob**

Page 31



**Model 06T PK**  
**Through Thread Lobe Knob**

Page 32



**Model 07F PK**  
**Female Lobe Knob with Logo**

Page 33



**Model 07M PK**  
**Male Lobe Knob with Logo**

Page 34



**Model 08F PK**  
**Female Lobe Knob**

Page 35



**Model 08M PK**  
**Male Lobe Knob**

Page 36



**Model 09F PK**  
**Female Wing Knob**

Page 37



**Model 09M PK**  
**Male Wing Knob**

Page 38



**Model 10F PK**  
**Female Tristar Knob**

Page 39



**Model 10M PK**  
**Male Tristar Knob**

Page 40-41



**Model 10T PK**  
**Through Thread Tristar Knob**

Page 42



**Model 11F PK**  
**Female Star Knob**

Page 43





**Model 11M PK  
Male Star Knob**

Page 44-45



**Model 11T PK  
Through Thread Star Knob**

Page 46



**Model 12F PK  
Female Star Knob**

Page 47



**Model 12M PK  
Male Star Knob**

Page 48-49



**Model 12T PK  
Through Thread Star Knob**

Page 50



**Model 13M PK  
Male Mini-Star Knob**

Page 51



**Model 14M PK  
Male Mini-Star Knob**

Page 52



**Model 15F PK  
Female Wing Knob**

Page 53



**Model 15M PK  
Male Wing Knob**

Page 54-55



**Model 15T PK  
Through Thread Wing Knob**

Page 56



**Model 16F PK  
Female Offset Wing Knob**

Page 57



**Model 16M PK  
Male Offset Wing Knob**

Page 58



**Model 17AF PK  
Female Moulded Thread Ball Knob**

Page 59-60



**Model 17BF PK  
Female Brass Insert Ball Knob**

Page 61



**Model 18AF PK**  
**Female Moulded Thread**  
**Ball Knob**

Page 62



**Model 18BF PK**  
**Female Brass Insert Ball**  
**Knob**

Page 63



**Model 19AF PK**  
**Female Push-Fit Ball Knob**

Page 64



**Model 20AF PK**  
**Female Push-Fit Ball Knob**  
**with Tolerance Ring**

Page 65-66



**Model 21F PK**  
**Female Button Knob**

Page 67



**Model 21M PK**  
**Male Button Knob**

Page 68



**Model 21SF PK**  
**Push-Fit Button Knob**

Page 69



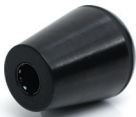
**Model 22F PK**  
**Female Taper Knob**

Page 70



**Model 22SF PK**  
**Push-Fit Taper Knob**

Page 71



**Model 23F PK**  
**Female Taper Knob**

Page 72



**Model 23SF PK**  
**Push-Fit Taper Knob**

Page 73



**Model 24F PK**  
**Female Thumbscrew**  
**Knob**

Page 74



**Model 24M PK**  
**Male Thumbscrew Knob**

Page 75



**Model 25F PK**  
**Female Thumbscrew**  
**Knob**

Page 76



**Model 25M PK**  
**Male Thumbscrew Knob**

Page 77



**Model 26F PK**  
**Female Thumbscrew Knob**

Page 78



**Model 26M PK**  
**Male Thumbscrew Knob**

Page 79



**Model 27F PK**  
**Female Thumbscrew Knob**

Page 80



**Model 27M PK**  
**Male Thumbscrew Knob**

Page 81-82



**Model 28M PK**  
**Male Thumbscrew Knob**

Page 83



**Model 29SAM PK**  
**Self Assembly Push-Fit Knob**

Page 84



**Model 30SAM PK**  
**Self Assembly Push-Fit Knob**

Page 85



**Model 31SAM PK**  
**Self Assembly Push-Fit Knob**

Page 86



**Model 32M PK**  
**Duroplast Male Thumbscrew Knob**

Page 87



**Model 33F PK**  
**Female Star Knob**

Page 88



**Model 33M PK**  
**Male Star Knob**

Page 89



**Model 33T PK**  
**Through Thread Star Knob**

Page 90



**Model 34F PK**  
**Female Lobe Knob**

Page 91



**Model 35D PK**  
Timer Control Knob

Page 92



**Model 36T PK**  
Through Thread Wing Knob

Page 93



**Model 36M PK**  
Male Wing Knob

Page 94



**Model 37M PK**  
Male Wing Knob

Page 95



## Index » Metal Knobs

**Model 01F MK**  
Female Metal Lobe Knob

Page 96

**HD SS**



**Model 01T MK**  
Through Thread Metal Lobe Knob

Page 97

**HD SS**



**Model 02F MK**  
Female Metal Lobe Knob

Page 98

**HD SS**



**Model 03F MK**  
Female Metal Lobe Knob

Page 99

**HD**



**Model 03T MK**  
Through Thread Metal Lobe Knob

Page 100

**HD**



**Model 04F MK**  
Female Metal Star Knob

Page 101

**HD SS**



**Model 05F MK**  
Female Metal Wing Knob

Page 102

**HD SS**



**Model 05M MK**  
Male Metal Wing Knob

Page 103

**HD SS**



**Model 06F MK**  
**Female Metal Wing Knob**

Page 104

**HD SS**



**Model 07F MK**  
**Female Polished Stainless Steel Ball Knob**

Page 105

**HD SS**



**Model 07SF MK**  
**Push-fit Polished Stainless Steel Ball Knob**

Page 106

**HD SS**



**Model 08F MK**  
**Female Polished Aluminium Ball Knob**

Page 107

**HD**



**Model 08SF MK**  
**Push-Fit Polished Aluminium Ball Knob**

Page 108

**HD**



## Index » Modifications & Custom Components

**Modifications & Custom Components**

Custom colours, threads, materials, sizes, finishes, etc.

Page 111





# Technical Specifications & Key

## Thermoplastic

Material: Nylon 6 + Polypropylene (Polypropylene)  
Working temperatures: Nylon up to 130°C peak and 80°C continuous use. Polypropylene maximum 70°C.  
Resistant to: alcohols, esters, aromatic hydrocarbons, dilute alkalis, ketones, oils, fuels, grease, fats, weatherability (including UV light - excludes coloured Nylon) and salt water.  
With Polypropylene also avoid halogenated hydrocarbons and flammable materials (can hold static charge).

## Reinforced Thermoplastic

Material: Nylon 6 glass filled  
Working temperature: up to 180°C peak, 110°C continuous use.  
Resistant to: alcohols, esters, aromatic hydrocarbons, dilute alkalis, ketones, oils, fuels, grease, fats, weatherability (including UV light) and salt water.

## Duroplast

Material: Phenolic Based Duroplast (PF)  
Working temperature: -30°C to 160°C  
Resistant to: diluted mineral acids, alcohols, chlorinated hydrocarbons, aromatic hydrocarbons, detergents, grease, oils, weatherability (including UV light). Avoid high pressure or high impact loads (can shatter).

## Soft-Touch Mouldings

Material: Polypropylene substrate, TPE over-mould. Rencol has standard parts already available in this design, used particularly extensively in both industrial and special needs market products.

## Brass

Material: BS2874 CZ121. Especially recommended for any materials likely to have continued exposure to temperatures below -30°C, where most steel grades become brittle. Also used as a marine grade material when nickel plated.

## Zinc Plated Steel

Material: EN1A leaded-bright zinc passivated.

## Stainless Steel

Material: Standard grade is 304. For medical, catering or marine use recommended grade is 316 - has high chloride resistance.

## Aluminium

Grades are 6061 and A380. Others available on request.

## Colours

Colour options include black, red, yellow, green, blue, white and grey. Other colours are available on request. If you would like to see the colours before ordering, samples can be provided free of charge.








## Thread Depths

Wherever possible thread depths are a minimum of 1.5 x the diameter of the thread.

## Tolerances

In general, our products are produced to the following tolerances:  
Bore sizes:  $\pm 0.1\text{mm}$  (0.004in)  
Outside dimensions:  $\pm 0.5\text{mm}$  (0.020in)  
Male thread length:  $\pm 1\text{mm}$  (0.040in)

## Key

-  **Colour options** - RAL colours on request.
-  **Heavy duty** - Particularly hard wearing item.
-  **Stainless steel** - Partly or totally stainless steel.
-  **Fixing from above**
-  **Fixing from below**
-  **Multi component build** - Assembly available.
-  **Soft touch** - TPE over mould. Oil resistant.



Rencol Components is **ISO 9001:2008 Certified**  
Our components are **REACH & RoHS Compliant**



**Material**

Two-part mouldings - Inner moulding Polypropylene - Over moulded with 'Soft Touch' TPE

**Female insert material**

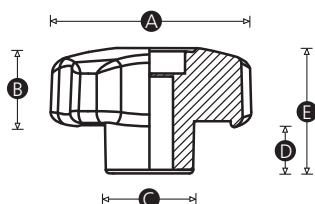
Brass

**Standard colour**

Black

**Cap colours**

Available with caps in many different colours (MOQs apply).



Part No.	A	B	C	D	E	Thread size
10777Q	28	16	12	10	26	M5
10780P	28	16	12	10	26	M6
7037Q	40	17	18	12	29	M6
10790T	40	17	18	12	29	M8
10798U	50	19	21	12	31	M6
10801T	50	19	21	12	31	M8
11118Q	50	19	21	12	31	M10
10809U	60	21	23	13	34	M8
10812T	60	21	23	13	34	M10
11119X	60	21	23	13	34	M12



**Material**

Two-part mouldings - Inner moulding Polypropylene - Over moulded with 'Soft Touch' TPE

**Male thread material**

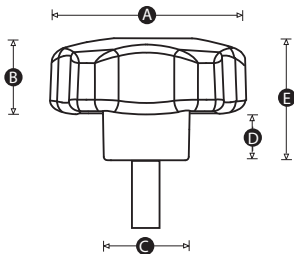
Zinc plated steel

**Standard colour**

Black

**Cap colours**

Available with caps in many different colours (MOQs apply).



Part No.	A	B	C	D	E	Thread size	Thread length (mm)
10782S	28	16	12	10	26	M5	10
10783Z	28	16	12	10	26	M5	15
10784V	28	16	12	10	26	M5	20
10786Y	28	16	12	10	26	M6	15
10787U	28	16	12	10	26	M6	20
11169V	40	17	18	12	29	M6	20
10793S	40	17	18	12	29	M6	25
11170R	40	17	18	12	29	M8	15
10795V	40	17	18	12	29	M8	16
10796R	40	17	18	12	29	M8	25
10797Y	40	17	18	12	29	M8	35
10804S	50	19	21	12	31	M6	35
11172U	50	19	21	12	31	M8	25
10807R	50	19	21	12	31	M8	35

Continued on facing page »

« Continued from facing page

Part No.	A	B	C	D	E	Thread size	Thread length (mm)
10808Y	50	19	21	12	31	M8	40
11173Q	50	19	21	12	31	M10	25
11175T	50	19	21	12	31	M10	40
10814W	60	21	23	13	34	M8	20
10815S	60	21	23	13	34	M8	30
10818R	60	21	23	13	34	M10	30
11178S	60	21	23	13	34	M12	40

ST

**Material**

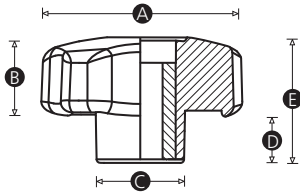
Two-part mouldings - Inner moulding Polypropylene - Over moulded with 'Soft Touch' TPE

**Female insert material**

Brass

**Standard colour**

Black



Part No.	A	B	C	D	E	Thread size
10779T	28	16	12	10	26	M5
10781W	28	16	12	10	26	M6
10788Q	40	17	18	12	29	M6
10791P	40	17	18	12	29	M8
10800X	50	19	21	12	31	M6
10802P	50	19	21	12	31	M8
10811X	60	21	23	13	34	M8
10813P	60	21	23	13	34	M10
11180V	60	21	23	13	34	M12





**Material**

High impact resistant thermoplastic

**Standard colour**

Black

**Finish**

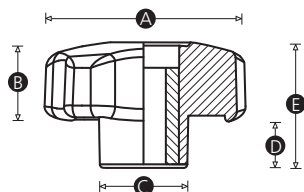
Matt

**Female insert material**

Brass, zinc plated steel or stainless steel

**Cap colours**

Available with caps in many different colours (MOQs apply).



Part No.	A	B	C	D	E	Thread size	Insert material
10820U	28	16	14	9	25	M5	Brass
10823T	28	16	14	9	25	M6	Brass
14300T	28	16	14	9	25	M6	Zinc plated steel
14320Q	28	16	14	9	25	M6	Stainless steel
10831U	40	17	18	12	29	M6	Brass
14301P	40	17	18	12	29	M8	Zinc plated steel
10834T	40	17	18	12	29	M8	Brass
14321X	40	17	18	12	29	M8	Stainless steel
10842U	50	19	21	12	31	M6	Brass
10845T	50	19	21	12	31	M8	Brass
14302W	50	19	21	12	31	M8	Zinc plated steel
14322T	50	19	21	12	31	M8	Stainless steel
11120T	50	19	21	12	31	M10	Brass
14303S	50	19	21	12	31	M10	Zinc plated steel
14323P	50	19	21	12	31	M10	Stainless steel

Continued overleaf »

« Continued from overleaf

<b>Part No.</b>	<b>A</b>	<b>B</b>	<b>C</b>	<b>D</b>	<b>E</b>	<b>Thread size</b>	<b>Insert material</b>
10853U	60	21	21	13	34	M8	Brass
10856T	60	21	21	13	34	M10	Brass
14304Z	60	21	21	13	34	M10	Zinc plated steel
14324W	60	21	21	13	34	M10	Stainless steel
11121P	60	21	21	13	34	M12	Brass
14305V	60	21	21	13	34	M12	Zinc plated steel
14325S	60	21	21	13	34	M12	Stainless steel



**Material**

High impact resistant thermoplastic

**Standard colour**

Black

**Finish**

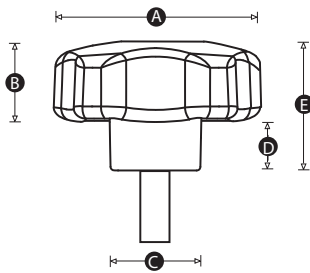
Matt

**Male thread material**

Zinc plated steel or stainless steel

**Cap colours**

Available with caps in many different colours (MOQs apply).



Part No.	A	B	C	D	E	Thread size	Thread length (mm)	Thread material
10825W	28	16	14	9	25	M5	10	Zinc plated steel
10826S	28	16	14	9	25	M5	15	Zinc plated steel
10827Z	28	16	14	9	25	M5	20	Zinc plated steel
10828V	28	16	14	9	25	M6	10	Zinc plated steel
14311T	28	16	14	9	25	M6	15	Stainless steel
14293Z	28	16	14	9	25	M6	20	Zinc plated steel
14312P	28	16	14	9	25	M6	20	Stainless steel
10836W	40	17	18	12	29	M6	15	Zinc plated steel
11181R	40	17	18	12	29	M6	20	Zinc plated steel
14294V	40	17	18	12	29	M6	25	Zinc plated steel
14313W	40	17	18	12	29	M6	25	Stainless steel
10839V	40	17	18	12	29	M8	15	Zinc plated steel
14295R	40	17	18	12	29	M8	20	Zinc plated steel
10840R	40	17	18	12	29	M8	25	Zinc plated steel

Continued overleaf »

« Continued from overleaf

Part No.	A	B	C	D	E	Thread size	Thread length (mm)	Thread material
14314S	40	17	18	12	29	M8	20	Stainless steel
14296Y	40	17	18	12	29	M8	30	Zinc plated steel
14315Z	40	17	18	12	29	M8	30	Stainless steel
10841Y	40	17	18	12	29	M8	35	Zinc plated steel
10847W	50	19	21	12	31	M6	20	Zinc plated steel
11182Y	50	19	21	12	31	M6	25	Zinc plated steel
10848S	50	19	21	12	31	M6	35	Zinc plated steel
14297U	50	19	21	12	31	M8	25	Zinc plated steel
14316V	50	19	21	12	31	M8	25	Stainless steel
10851R	50	19	21	12	31	M8	35	Zinc plated steel
10852Y	50	19	21	12	31	M8	40	Zinc plated steel
11184Q	50	19	21	12	31	M10	25	Zinc plated steel
11185X	50	19	21	12	31	M10	35	Zinc plated steel
11186T	50	19	21	12	31	M10	40	Zinc plated steel
10858W	60	21	21	13	34	M8	20	Zinc plated steel
10859S	60	21	21	13	34	M8	30	Zinc plated steel
10860Z	60	21	21	13	34	M8	40	Zinc plated steel
10861V	60	21	21	13	34	M10	20	Zinc plated steel
10862R	60	21	21	13	34	M10	30	Zinc plated steel
14298Q	60	21	21	13	34	M10	25	Zinc plated steel
14317R	60	21	21	13	34	M10	25	Stainless steel
10863Y	60	21	21	13	34	M10	40	Zinc plated steel
14299X	60	21	21	13	34	M12	30	Zinc plated steel
14318Y	60	21	21	13	34	M12	30	Stainless steel
11189S	60	21	21	13	34	M12	40	Zinc plated steel
11190Z	60	21	21	13	34	M12	50	Zinc plated steel

SS

**Material**

High impact resistant thermoplastic

**Standard colour**

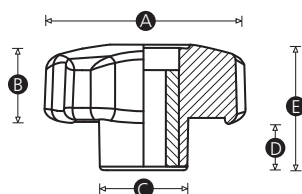
Black

**Finish**

Matt

**Female insert material**

Brass, zinc plated steel or stainless steel



Part No.	A	B	C	D	E	Thread size	Insert material
10822X	28	16	14	9	25	M5	Brass
10824P	28	16	14	9	25	M6	Brass
14306R	28	16	14	9	25	M6	Zinc plated steel
14326Z	28	16	14	9	25	M6	Stainless steel
10833X	40	17	18	12	29	M6	Brass
10835T	40	17	18	12	29	M8	Brass
14307Y	40	17	18	12	29	M8	Zinc plated steel
14327V	40	17	18	12	29	M8	Stainless steel
10846P	50	19	21	12	31	M8	Brass
14328R	50	19	21	12	31	M8	Stainless steel
11187P	50	19	21	12	31	M10	Brass
14309Q	50	19	21	12	31	M10	Zinc plated steel
14329Y	50	19	21	12	31	M10	Stainless steel
10857P	60	21	12	13	34	M10	Brass
11191V	60	21	12	13	34	M12	Brass
14310X	60	21	12	13	34	M12	Zinc plated steel
14330U	60	21	12	13	34	M12	Stainless steel





**Material**

High impact resistant thermoplastic

**Standard colour**

Black

**Finish**

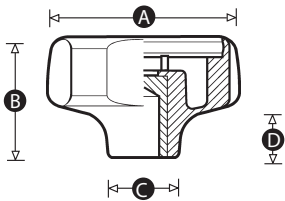
Matt

**Female insert material**

Brass

**Cap colours**

Black as standard. Caps available in many different RAL colours (MOQs apply).



Part No.	A	B	C	D	Thread size
8585R	30	21	12	10	M5
8587U	30	21	12	10	M6
7938U	40	27	15	12	M6
7942P	40	27	15	12	M8
7881R	50	33	18	13	M6
7880V	50	33	18	13	M8
7879Z	50	33	18	13	M10
7960U	60	40	22	16	M8
7964P	60	40	22	16	M10
7963T	60	40	22	16	M12
7962X	75	52	26	20	M10
7961Q	75	52	26	20	M12
7965W	75	52	26	20	M16



**Material**

High impact resistant thermoplastic

**Standard colour**

Black

**Finish**

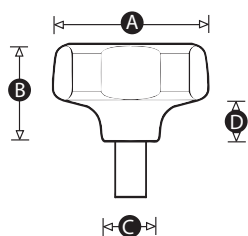
Matt

**Male thread material**

Zinc plated steel

**Cap colours**

Black as standard. Caps available in many different RAL colours (MOQs apply).



Part No.	A	B	C	D	Thread size	Thread length (mm)
8554U	30	21	12	10	M5	15
8553Y	30	21	12	10	M5	20
8555Q	30	21	12	10	M6	15
8556X	30	21	12	10	M6	20
8557T	30	21	12	10	M6	25
7947R	40	27	15	12	M6	15
7952T	40	27	15	12	M6	20
7951X	40	27	15	12	M6	25
7948Y	40	27	15	12	M8	15
7950Q	40	27	15	12	M8	20
7953P	40	27	15	12	M8	25
7887P	50	33	18	13	M6	20
7889S	50	33	18	13	M6	25
7891V	50	33	18	13	M6	35

Continued overleaf »

« Continued from overleaf

Part No.	A	B	C	D	Thread size	Thread length (mm)
7890Z	50	33	18	13	M8	25
7892R	50	33	18	13	M8	35
7886T	50	33	18	13	M8	40
7883U	50	33	18	13	M10	25
7893Y	50	33	18	13	M10	35
7885X	50	33	18	13	M10	40
7974T	60	40	22	16	M10	20
7958R	60	40	22	16	M10	30
7976W	60	40	22	16	M12	30
7977S	60	40	22	16	M12	40
7945Z	75	52	26	20	M10	30
7946V	75	52	26	20	M10	40
7969R	75	52	26	20	M12	40
7970Y	75	52	26	20	M12	50



**Material**

High impact resistant thermoplastic

**Standard colour**

Black

**Finish**

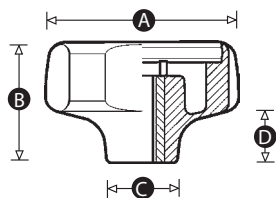
Matt

**Female insert material**

Brass

**Cap colours**

Black as standard. Caps available in many different RAL colours (MOQs apply).



Part No.	A	B	C	D	Thread size
8560S	30	21	12	10	M5
8558P	30	21	12	10	M6
8566Q	40	27	15	12	M6
8564Y	40	27	15	12	M8
8562V	50	33	18	13	M6
8550Z	50	33	18	13	M8
8574R	60	40	22	16	M8
8572Z	60	40	22	16	M10
8570W	75	52	26	20	M10
8568T	75	52	26	20	M12

**Material**

High impact resistant thermoplastic

**Standard colour**

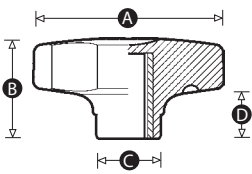
Black

**Finish**

Matt

**Female insert material**

Brass



Part No.	A	B	C	D	Thread size
8423Q	30	13	11	6	M6
8421Y	40	20	14	11	M8
8420R	50	23	19	11	M8
8419V	50	23	19	11	M10
8418Z	60	27	23	14	M10
8417S	60	27	23	14	M12



**Material**

High impact resistant thermoplastic

**Standard colour**

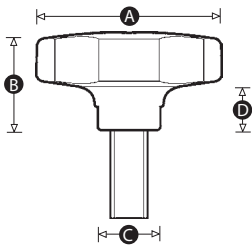
Black

**Finish**

Matt

**Male thread material**

Zinc plated steel



Part No.	A	B	C	D	Thread size	Thread length (mm)
8489Q	30	13	11	6	M6	20
8496V	40	20	14	11	M8	25
8503P	50	23	19	11	M8	25
8511Q	60	27	23	14	M10	30

**Material**

High impact resistant thermoplastic

**Standard colour**

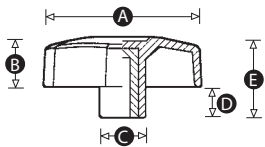
Black

**Finish**

Matt

**Female insert material**

Brass and zinc plated steel



Part No.	A	B	C	D	E	Thread size	Insert material
8991V	28	11	11	6	17	M5	Brass
5086Y	28	11	11	6	17	M6	Brass
5257S	40	12	15	8	20	M6	Brass
8482W	40	12	15	8	20	M8	Brass
15150S	40	12	15	8	20	M6	Zinc plated steel
15151Z	40	12	15	8	20	M8	Zinc plated steel
4842Y	50	15	15	9	24	M6	Brass
6974P	50	15	15	9	24	M8	Brass
4846P	60	18	19	12	30	M8	Brass
8983U	60	18	19	12	30	M10	Brass
15158T	60	18	19	12	30	M8	Zinc plated steel

**Material**

High impact resistant thermoplastic

**Standard colour**

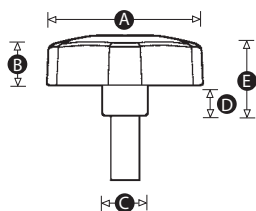
Black

**Finish**

Matt

**Male thread material**

Zinc plated steel



Part No.	A	B	C	D	E	Thread size	Thread length (mm)
5764P	28	11	11	6	17	M5	10
5743W	28	11	11	6	17	M5	15
5750Y	28	11	11	6	17	M5	20
5771Q	28	11	11	6	17	M6	10
5779S	28	11	11	6	17	M6	15
5757X	28	11	11	6	17	M6	20
4778T	40	12	15	8	20	M6	15
15152V	40	12	15	8	20	M6	20
4780R	40	12	15	8	20	M6	25
15153R	40	12	15	8	20	M6	35
15154Y	40	12	15	8	20	M8	15
15155U	40	12	15	8	20	M8	20
15156Q	40	12	15	8	20	M8	25
15157X	40	12	15	8	20	M8	35

*Continued overleaf »*

« Continued from overleaf

Part No.	A	B	C	D	E	Thread size	Thread length (mm)
4786Y	50	15	15	9	24	M6	20
4787Q	50	15	15	9	24	M6	25
4788T	50	15	15	9	24	M6	35
4790R	50	15	15	9	24	M8	20
7625S	50	15	15	9	24	M8	30
4792X	50	15	15	9	24	M8	35
4793P	50	15	15	9	24	M8	40
15159P	60	18	19	12	30	M8	20
4795V	60	18	19	12	30	M8	30
15160W	60	18	19	12	30	M8	40
4798T	60	18	19	12	30	M10	30
4799W	60	18	19	12	30	M10	40

**Material**

High impact resistant thermoplastic

**Standard colour**

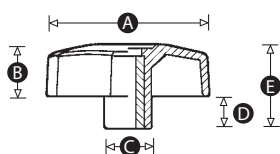
Black

**Finish**

Matt

**Female insert material**

Brass



Part No.	A	B	C	D	E	Thread size
8990Z	28	11	11	6	17	M5
5094S	28	11	11	6	17	M6
8986T	40	12	15	8	20	M6
8402X	40	12	15	8	20	M8
4844T	50	15	15	9	24	M6
7452R	50	15	15	9	24	M8
11533R	60	18	19	12	30	M8
8959R	60	18	19	12	30	M10

**Material**

Duroplast

**Standard colour**

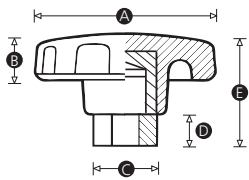
Black

**Finish**

Gloss

**Female insert material**

Brass



Part No.	A	B	C	D	E	Thread size
4512V	32	11	12	8	27	M5
994R	32	11	12	8	27	M6
1004V	44	13	14	8	29	M8
1002S	44	13	14	8	29	M10

**Material**

Duroplast

**Standard colour**

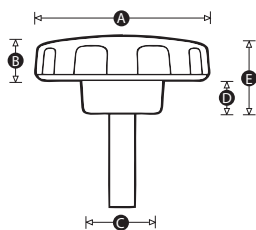
Black

**Finish**

Gloss

**Male thread material**

Zinc plated steel



Part No.	A	B	C	D	E	Thread size	Thread length (mm)
4070V	32	11	12	8	19	M6	15
1306X	32	11	18	8	19	M6	20
1307T	32	11	18	8	19	M6	25
1308P	32	11	12	8	19	M6	30
1325Y	44	13	24	8	21	M8	20
1327Q	44	13	24	8	21	M8	25
2861P	44	13	24	8	21	M8	30
2868T	57	18	18	12	27	M10	20
1343S	57	15	25	12	27	M10	30
4683P	57	15	25	12	27	M10	40
1361X	70	18	28	14	32	M12	40
5405P	70	18	28	14	32	M12	50

**Material**

Duroplast

**Standard colour**

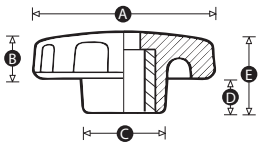
Black

**Finish**

Gloss

**Female insert material**

Brass



Part No.	A	B	C	D	E	Thread size
1314Y	32	11	18	8	19	M6
1331W	44	13	24	8	21	M8
1351T	57	15	25	12	27	M10
1353W	57	15	25	12	27	M12
1364W	70	18	28	14	32	M12





**Material**

Polypropylene

**Standard colour**

Black

**Finish**

Matt

**Female insert material**

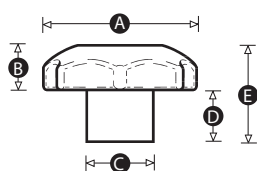
Brass

**Cap colours**

Black as standard. Caps available in many different RAL colours (MOQs apply).

**Options**

Add your company logo to the cap for a one off tooling charge of £160 (MOQs apply).



Part No.	A	B	C	D	E	Thread size
8641Y	30	13	14	9	22	M6
8642U	40	13	18	12	25	M6
8644X	50	16	21	16	32	M8
8646P	60	21	24	19	40	M10
8648S	80	25	35	25	50	M12
8649Z	80	25	35	25	50	M16



**Material**

Polypropylene

**Standard colour**

Black

**Finish**

Matt

**Male thread material**

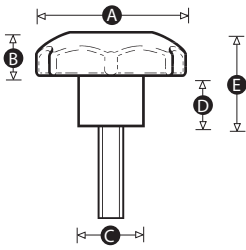
Zinc plated steel

**Cap colours**

Black as standard. Caps available in many different RAL colours (MOQs apply).

**Options**

Add your company logo to the cap for a one off tooling charge of £160 (MOQs apply).



Part No.	A	B	C	D	E	Thread size	Thread length (mm)
8630Y	30	13	14	9	22	M6	10
8628V	30	13	14	9	22	M6	20
8626S	30	13	14	9	22	M6	30
8619Y	40	13	18	12	25	M8	15
8622X	40	13	18	12	25	M8	25
8618R	50	16	21	16	32	M8	20
8616Z	50	16	21	16	32	M8	30
8614W	50	16	21	16	32	M8	40
8612T	50	16	21	16	32	M10	30
8610Q	50	16	21	16	32	M10	40
8603W	60	21	24	19	40	M12	30
8600X	60	21	24	19	40	M12	50

**Material**

High impact resistant thermoplastic

**Standard colour**

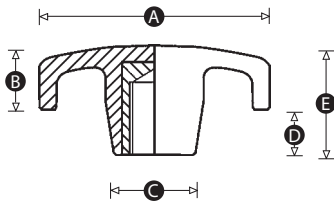
Black

**Finish**

Matt

**Female insert material**

Brass



Part No.	A	B	C	D	E	Thread size
9577U	32	11	15	9	20	M5
9245R	32	11	15	9	20	M6
9243Z	44	11	17	10	21	M6
9242S	44	11	17	10	21	M8
9240P	57	15	20	11	26	M8
9239T	57	15	20	11	26	M10

**Material**

High impact resistant thermoplastic

**Standard colour**

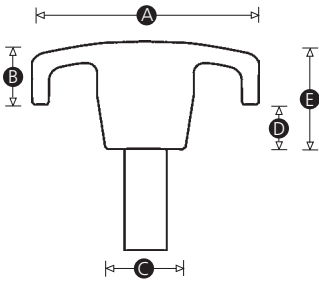
Black

**Finish**

Matt

**Male thread material**

Zinc plated steel



Part No.	A	B	C	D	E	Thread size	Thread length (mm)
9235Y	32	11	15	9	20	M6	25
9233V	44	11	17	10	21	M8	25
9230W	57	15	20	11	26	M10	30

**Material**

High impact resistant thermoplastic

**Standard colour**

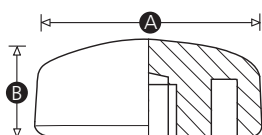
Black

**Finish**

Matt

**Female insert material**

Brass



Part No.	A	B	Thread size
10605W	26	13	M5
11109T	26	13	M6
10608V	32	15	M6
10617S	32	15	M8
10612Q	40	17	M8

**Material**

High impact resistant thermoplastic

**Standard colour**

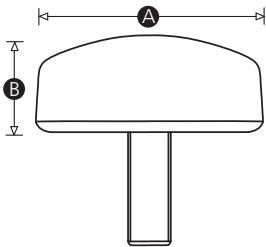
Black

**Finish**

Matt

**Male thread material**

Zinc plated steel



Part No.	A	B	Thread size	Thread length (mm)
10606S	26	13	M5	10
10607Z	26	13	M5	16
11138Y	26	13	M6	16
10609R	32	15	M6	10
10610Y	32	15	M6	16
10611U	32	15	M6	20
10616W	32	15	M6	25
10613X	40	17	M8	16
10614T	40	17	M8	25

**Material**

High impact resistant thermoplastic

**Standard colour**

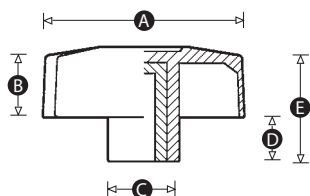
Black

**Finish**

Matt

**Female insert material**

Brass or zinc plated steel



Part No.	A	B	C	D	E	Thread size	Insert material
8974X	28	11	11	6	17	M5	Brass
5106P	28	11	11	6	17	M6	Brass
8975T	40	12	15	8	20	M6	Brass
15172S	40	12	15	8	20	M6	Zinc plated steel
9505W	40	12	15	8	20	M8	Brass
15173Z	40	12	15	8	20	M8	Zinc plated steel
11532V	50	15	15	9	24	M6	Brass
8967S	50	15	15	9	24	M8	Brass
4834T	60	18	19	12	30	M8	Brass
8963X	60	18	19	12	30	M10	Brass
15180T	60	18	19	12	30	M8	Zinc plated steel

**Material**

High impact resistant thermoplastic

**Standard colour**

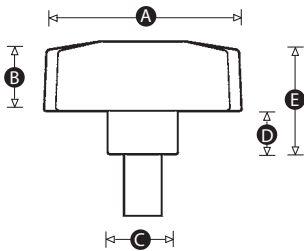
Black

**Finish**

Matt

**Male thread material**

Zinc plated steel



Part No.	A	B	C	D	E	Thread size	Thread length (mm)
5108U	28	11	11	6	17	M5	15
5111V	28	11	11	6	17	M6	15
5112Y	28	11	11	6	17	M6	20
4756Y	40	12	15	8	20	M6	15
15174V	40	12	15	8	20	M6	20
4758T	40	12	15	8	20	M6	25
15175R	40	12	15	8	20	M6	35
15176Y	40	12	15	8	20	M8	15
15177U	40	12	15	8	20	M8	20
15178Q	40	12	15	8	20	M8	25
15179X	40	12	15	8	20	M8	35
4764S	50	15	15	9	24	M6	20
4769W	50	15	15	9	24	M8	25
4770R	50	15	15	9	24	M8	35

Continued on facing page »



« Continued from facing page

<b>Part No.</b>	<b>A</b>	<b>B</b>	<b>C</b>	<b>D</b>	<b>E</b>	<b>Thread size</b>	<b>Thread length (mm)</b>
15181P	60	18	19	12	30	M8	15
15182W	60	18	19	12	30	M8	20
15183S	60	18	19	12	30	M8	30
15184Z	60	18	19	12	30	M8	40
4776Y	60	18	19	12	30	M10	30
4777Q	60	18	19	12	30	M10	40

**Material**

High impact resistant thermoplastic

**Standard colour**

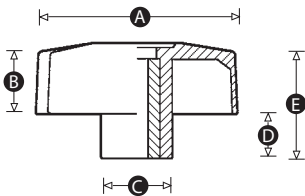
Black

**Finish**

Matt

**Female insert material**

Brass



Part No.	A	B	C	D	E	Thread size
8972U	28	11	11	6	17	M5
5114T	28	11	11	6	17	M6
8976P	40	12	15	8	20	M6
9746P	40	12	15	8	20	M8
8968Z	50	15	15	9	24	M8
8964T	60	18	19	12	30	M10

**Material**

High impact resistant thermoplastic

**Standard colour**

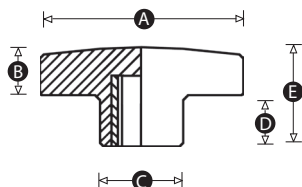
Black

**Finish**

Matt

**Female insert material**

Brass, zinc plated steel or stainless steel



Part No.	A	B	C	D	E	Thread size	Insert material
9141P	38	11	16	12	23	M6	Brass
14337Z	38	11	16	12	23	M8	Zinc plated steel
9139X	50	12	20	15	27	M6	Brass
9138Q	50	12	20	15	27	M8	Brass
14338V	50	11	20	15	26	M8	Zinc plated steel
14349V	50	11	20	15	26	M8	Stainless steel
14350R	50	11	20	15	26	M10	Stainless steel
9136Y	60	14	24	15	29	M8	Brass
9135R	60	14	24	15	29	M10	Brass
14340Y	60	14	24	15	29	M10	Zinc plated steel
9134V	60	14	24	15	29	M12	Brass
14341U	60	14	24	15	29	M12	Steel
14351Y	60	14	24	15	29	M12	Stainless steel

**Material**

High impact resistant thermoplastic

**Standard colour**

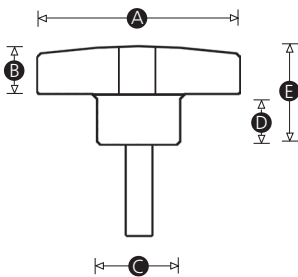
Black

**Finish**

Matt

**Thread material**

Zinc plated steel or stainless steel



Part No.	A	B	C	D	E	Thread size	Thread length (mm)	Thread material
9150X	38	11	16	12	23	M6	20	Zinc plated steel
14331Q	38	11	16	12	23	M6	25	Zinc plated steel
14344T	38	11	16	12	23	M6	25	Stainless steel
14332X	38	11	16	12	23	M8	20	Zinc plated steel
9148U	38	11	16	12	23	M6	30	Zinc plated steel
14345P	38	11	16	12	23	M8	20	Stainless steel
14333T	38	11	16	12	23	M8	30	Zinc plated steel
14346W	38	11	16	12	23	M8	30	Stainless steel
9147Y	50	12	20	15	27	M8	20	Zinc plated steel
14334P	50	12	20	15	27	M8	25	Zinc plated steel
14347S	50	12	20	15	27	M8	25	Stainless steel
9145V	50	12	20	15	27	M8	30	Zinc plated steel
14335W	60	14	24	15	29	M10	25	Steel
14348Z	60	14	24	15	29	M10	25	Stainless steel

Continued on facing page »

« Continued from facing page

Part No.	A	B	C	D	E	Thread size	Thread length (mm)	Thread material
9143S	60	14	24	15	29	M10	30	Zinc plated steel
9142W	60	14	24	15	29	M10	40	Zinc plated steel
14336S	60	14	24	15	29	M12	30	Zinc plated steel

**Material**

High impact resistant thermoplastic

**Standard colour**

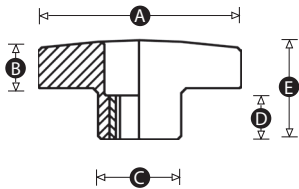
Black

**Finish**

Matt

**Insert material**

Brass, zinc plated steel or stainless steel



Part No.	A	B	C	D	E	Thread size	Insert material
9151T	38	11	16	12	23	M6	Brass
14342Q	38	11	16	12	23	M8	Zinc plated steel
14352U	38	11	16	12	23	M8	Stainless steel
9152P	50	12	20	15	27	M8	Brass
14343X	50	12	20	15	27	M10	Zinc plated steel
14353Q	50	12	20	15	27	M10	Stainless steel
9246Y	60	14	24	15	29	M10	Brass

**Material**

High impact resistant thermoplastic

**Standard colour**

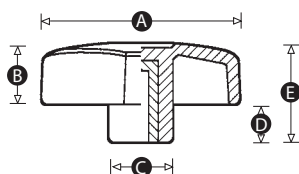
Black

**Finish**

Matt

**Thread material**

Brass or zinc plated steel



Part No.	A	B	C	D	E	Thread size	Thread material
8973Q	28	11	11	6	17	M5	Brass
5096Y	28	11	11	6	17	M6	Brass
8977W	40	12	15	8	20	M6	Brass
15161S	40	12	15	8	20	M6	Zinc plated steel
8958V	40	12	15	8	20	M8	Brass
15162Z	40	12	15	8	20	M8	Zinc plated steel
4818U	50	15	15	9	24	M6	Brass
8969V	50	15	15	9	24	M8	Brass
4822Y	60	18	19	12	30	M8	Brass
15169T	60	18	19	12	30	M8	Zinc plated steel
8965P	60	18	19	12	30	M10	Brass

**Material**

High impact resistant thermoplastic

**Standard colour**

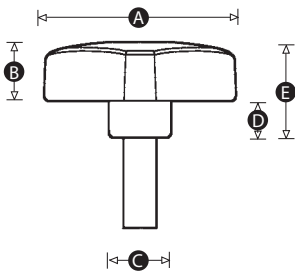
Black

**Finish**

Matt

**Male thread material**

Zinc plated steel



Part No.	A	B	C	D	E	Thread size	Thread length (mm)
6282V	28	11	11	6	17	M5	10
6296W	28	11	11	6	17	M5	15
6303P	28	11	11	6	17	M5	20
6289U	28	11	11	6	17	M6	10
5101V	28	11	11	6	17	M6	15
5102Y	28	11	11	6	17	M6	20
4734S	40	12	15	8	20	M6	15
15163V	40	12	15	8	20	M6	20
4736Y	40	12	15	8	20	M6	25
15164R	40	12	15	8	20	M6	35
15165Y	40	12	15	8	20	M8	15
15166U	40	12	15	8	20	M8	20
15167Q	40	12	15	8	20	M8	25
15168X	40	12	15	8	20	M8	35

Continued on facing page »



« Continued from facing page

Part No.	A	B	C	D	E	Thread size	Thread length (mm)
4742X	50	15	15	9	24	M6	20
4743P	50	15	15	9	24	M6	25
4744S	50	15	15	9	24	M6	35
4747Q	50	15	15	9	24	M8	25
4748T	50	15	15	9	24	M8	35
4749W	50	15	15	9	24	M8	40
4750R	60	18	19	12	30	M8	20
15170P	60	18	19	12	30	M8	20
4751U	60	18	19	12	30	M8	30
15171W	60	18	19	12	30	M8	40
4754S	60	18	19	12	30	M10	30
4755V	60	18	19	12	30	M10	40

**Material**

High impact resistant thermoplastic

**Standard colour**

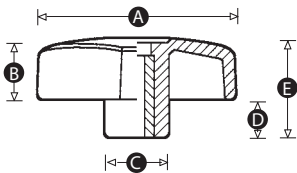
Black

**Finish**

Matt

**Female insert material**

Brass



Part No.	A	B	C	D	E	Thread size
8971Y	28	11	11	6	17	M5
5104T	28	11	11	6	17	M6
8978S	40	12	15	8	20	M6
6973T	40	12	15	8	20	M8
4820S	50	15	15	9	24	M6
8970R	50	15	15	9	24	M8
4824T	60	18	19	12	30	M8
8966W	60	18	19	12	30	M10

**Material**

High impact resistant thermoplastic

**Standard colour**

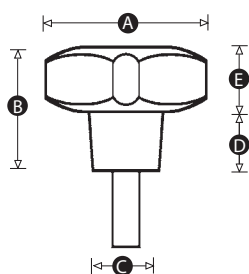
Black

**Finish**

Matt

**Male thread material**

Zinc plated steel



Part No.	A	B	C	D	E	Thread size	Thread length (mm)
6928X	25	17	12	10	7	M4	10
7145Y	25	17	12	10	7	M4	20
7147Q	25	17	12	10	7	M5	10
7141S	25	17	12	10	7	M5	20

**Material**

High impact resistant thermoplastic

**Standard colour**

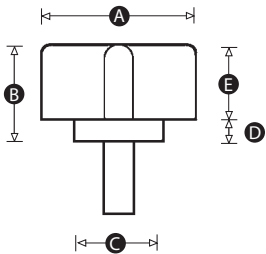
Black

**Finish**

Matt

**Male thread material**

Zinc plated steel



Part No.	A	B	C	D	E	Thread size	Thread length (mm)
7143V	21	14	11	4	10	M5	10
8760V	21	14	11	4	10	M5	20
2736T	21	14	11	4	10	M6	10
5069W	21	14	11	4	10	M6	20

**Material**

High impact resistant thermoplastic

**Standard colour**

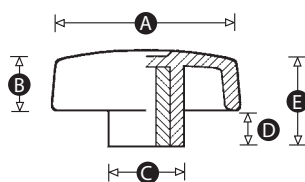
Black

**Finish**

Matt

**Female insert material**

Brass



Part No.	A	B	C	D	E	Thread size
8992R	28	10	11	3	13	M5
4957S	28	10	11	3	13	M6
7850U	40	12	15	8	20	M5
8988W	40	12	15	8	20	M6
4851V	40	12	15	8	20	M8
4892Y	50	15	15	9	24	M6
8985X	50	15	15	9	24	M8
4854T	60	18	19	12	30	M8
5263R	60	18	19	12	30	M10

**Material**

High impact resistant thermoplastic

**Standard colour**

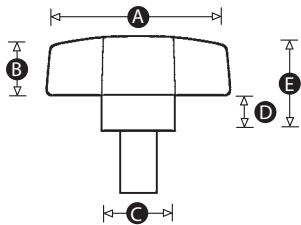
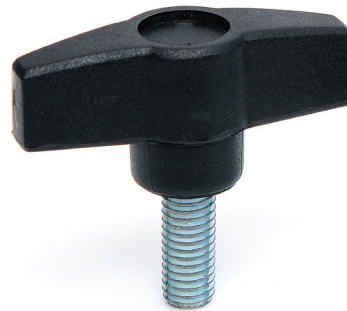
Black

**Finish**

Matt

**Male thread material**

Zinc plated steel



Part No.	A	B	C	D	E	Thread size	Thread length (mm)
6098P	28	10	11	3	13	M5	10
6112U	28	10	11	3	13	M5	15
5528Y	28	10	11	3	13	M5	20
6105S	28	10	11	3	13	M6	10
4955X	28	10	11	3	13	M6	15
5527V	28	10	11	3	13	M6	20
6137Y	40	12	15	8	20	M6	15
4801V	40	12	15	8	20	M6	20
4802Y	40	12	15	8	20	M6	25
4803Q	40	12	15	8	20	M6	35
4804T	40	12	15	8	20	M8	15
4806P	40	12	15	8	20	M8	25
4807R	40	12	15	8	20	M8	35
6204Q	50	15	15	9	24	M6	25

Continued on facing page »

« Continued from facing page

Part No.	A	B	C	D	E	Thread size	Thread length (mm)
6204Q	50	15	15	9	24	M6	25
6211S	50	15	15	9	24	M6	35
4897R	50	15	15	9	24	M6	40
6197Y	50	15	15	9	24	M8	20
6177Y	50	15	15	9	24	M8	25
6218R	50	15	15	9	24	M8	35
6232V	50	15	15	9	24	M8	40
4809X	60	18	19	12	30	M8	30
4810S	60	18	19	12	30	M8	40
4811V	60	18	19	12	30	M10	20
4812Y	60	18	19	12	30	M10	30
4813Q	60	18	19	12	30	M10	40

**Material**

High impact resistant thermoplastic

**Standard colour**

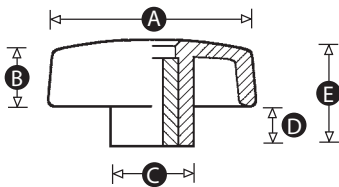
Black

**Finish**

Matt

**Female insert material**

Brass



Part No.	A	B	C	D	E	Thread size
8989S	28	10	11	3	13	M5
7664Q	28	10	11	3	13	M6
8987P	40	12	15	8	20	M6
4853Q	40	12	15	8	20	M8
11604T	50	15	15	9	24	M6
8984Q	50	15	15	9	24	M8
11605P	60	18	19	12	30	M8
5193Q	60	18	19	12	30	M10



**Material**

High impact resistant thermoplastic

**Standard colour**

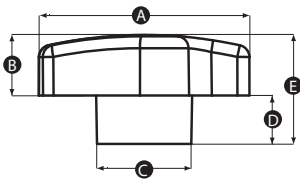
Black

**Finish**

Matt

**Female insert material**

Brass



Part No.	A	B	C	D	E	Thread size
12723U	35	10	16	8	18	M5
12724Q	35	10	16	8	18	M6
12725X	45	13	20	11	24	M8
12726T	45	13	20	11	24	M10

**Material**

High impact resistant thermoplastic

**Standard colour**

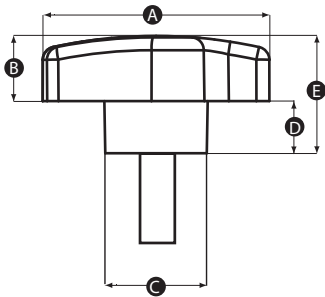
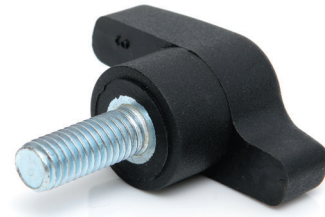
Black

**Finish**

Matt

**Male thread material**

Zinc plated steel



Part No.	A	B	C	D	E	Thread size	Thread length (mm)
12727P	35	10	16	8	18	M5	15
12728W	35	10	16	8	18	M5	20
12729S	35	10	16	8	18	M6	15
12730Z	35	10	16	8	18	M6	20
12731V	35	10	16	8	18	M6	30
12732R	35	10	16	8	18	M8	15
12733Y	45	13	20	11	24	M8	20
12734U	45	13	20	11	24	M8	30

**Material**

Duroplast

**Standard colour**

Black

**Finish**

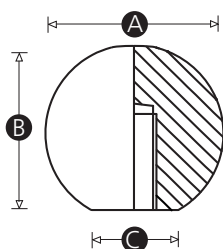
Gloss finish

**Thread**

Moulded thread

**Thread diameter**

Imperial and metric sizes



Part No.	A	B	C	Thread size (Metric)	Thread size (Imperial)
2100W	16	15	8	M4	-
2101S	16	15	8	M5	-
2102P	16	15	8	M6	-
300P	19	17	12	M4	-
2108X	19	17	12	M5	-
303Q	19	17	12	M6	-
321W	25	23	14	M6	-
322P	25	23	14	M8	-
320S	25	23	14	M10	-
356T	32	30	15	M6	-
359U	32	30	15	M8	-
353S	32	30	15	M10	-
355P	32	30	15	M12	-
387W	38	36	17	M6	-
388P	38	36	17	M8	-

*Continued overleaf »*

« Continued from overleaf

Part No.	A	B	C	Thread size (Metric)	Thread size (Imperial)
385P	38	36	17	M10	-
386S	38	36	17	M12	-
404U	44	43	13	M10	-
405Y	44	43	13	M12	-
406R	44	43	13	M16	-
3202W	51	49	20	M10	-
420S	51	49	20	M12	-
421W	51	49	20	M16	-
2183U	51	49	20	M20	-
295V	19	17	12	-	1/4 W
311P	25	23	14	-	1/4 W
348U	32	30	15	-	5/16 W
342S	32	30	15	-	3/8 W
379X	38	36	15	-	3/8 W
375S	38	36	17	-	1/2 W
401T	44	43	13	-	3/8 W
398W	44	43	13	-	1/2 W
414Q	51	49	20	-	1/2 W
419P	51	49	20	-	5/8 W

**Material**

Duroplast

**Standard colour**

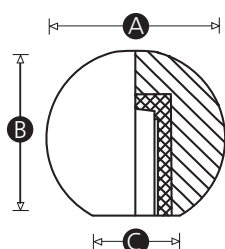
Black

**Finish**

Gloss finish

**Female insert material**

Brass



Part No.	A	B	C	Thread size
587W	25	23	14	M6
589T	25	23	14	M8
600P	32	30	15	M6
602X	32	30	15	M8
598W	32	30	15	M10
624X	38	36	17	M8
619P	38	36	17	M10
2284X	44	43	13	M10
639R	44	43	13	M12
3562P	51	49	20	M12



**Material**

High impact resistant thermoplastic

**Standard colour**

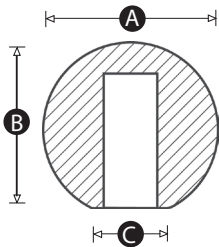
Black. Other RAL colours on request (MOQs apply).

**Finish**

Matt finish

**Thread**

Moulded thread



Part No.	A	B	C	Thread size
14287Q	15	14	10	M4
14288X	20	19	10	M5
13649X	25	23	13	M6
14185R	25	23	13	M8
13650T	32	30	14	M8
13651P	38	36	18	M8
14289T	45	43	18	M10
14290P	50	49	19	M12



**Material**

High impact resistant thermoplastic

**Standard colour**

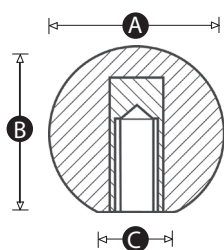
Black. Other RAL colours on request (MOQs apply).

**Finish**

Matt finish

**Female insert material**

Brass



Part No.	A	B	C	Thread size
9985Q	25	23	13	M6
9984U	25	23	13	M8
9983Y	32	30	14	M6
9898X	32	30	14	M8
9982R	38	36	18	M8
9981V	38	36	18	M10



**Material**

High impact resistant thermoplastic

**Standard colour**

Black. Other RAL colours on request (MOQs apply).

**Finish**

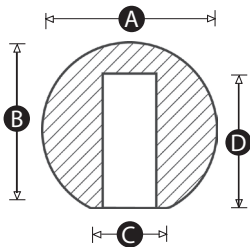
Matt finish

**Bore**

Push-fit assembly

**Shaft diameter**

Imperial and metric sizes



Part No.	A	B	C	D	Shaft type	To fit shaft diameter - H9 tolerance (mm)	To fit shaft diameter - H9 tolerance (inches)
14291W	20	19	10	15	Plain	5	0.188
9977P	25	23	13	17	Plain	6	0.25
9943T	25	23	13	17	Plain	8	0.313
9899T	32	30	14	24	Plain	8	0.313
9978W	32	30	14	24	Plain	10	0.375
9979S	38	36	18	27	Plain	10	0.375
9980Z	38	36	18	27	Plain	12	0.5
14292S	50	49	19	40	Plain	12	0.5



**Material**

Duroplast

**Standard colour**

Black

**Finish**

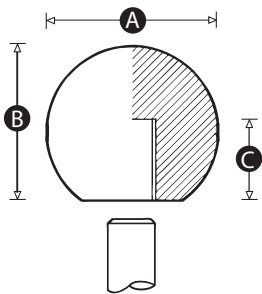
Gloss finish

**Bore**

Push-fit assembly with tolerance ring

**Shaft diameter**

Imperial and metric sizes



Part No.	A	B	C	Shaft type	To fit shaft diameter - H9 tolerance (mm)	To fit shaft diameter - H9 tolerance (inches)
1469U	19	17	12	Plain	-	0.188
1471X	19	17	12	Plain	-	0.25
1474W	25	23	15	Plain	-	0.25
1478R	25	23	15	Plain	-	0.313
1476P	32	30	17	Plain	-	0.25
1482X	32	30	15	Plain	-	0.313
1484P	32	30	20	Plain	-	0.375
1490Y	38	36	20	Plain	-	0.375
1491U	38	36	20	Plain	-	0.5
1493X	44	43	20	Plain	-	0.5
1511R	44	43	23	Plain	-	0.625
1494T	51	49	20	Plain	-	0.5
1512Y	51	49	23	Plain	-	0.625

*Continued overleaf »*

« Continued from overleaf

Part No.	A	B	C	Shaft type	To fit shaft diameter - H9 tolerance (mm)	To fit shaft diameter - H9 tolerance (inches)
1496W	19	17	13	Plain	5	-
1498P	19	17	13	Plain	6	-
1500R	25	23	16	Plain	6	-
1503Q	25	23	15	Plain	8	-
1502U	32	30	16	Plain	6	-
1505T	32	30	15	Plain	8	-
1528P	32	30	19	Plain	10	-
1531P	38	36	19	Plain	10	-
1536Q	38	36	20	Plain	12	-
1542P	44	43	20	Plain	12	-
1549T	44	43	23	Plain	16	-
3025P	51	49	20	Plain	12	-
1551W	51	49	23	Plain	16	-

**Material**

High impact resistant thermoplastic

**Standard colour**

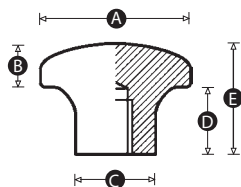
Black

**Finish**

Matt

**Thread**

Moulded thread



Part No.	A	B	C	D	E	Thread size
15070T	22	7	12	12	19	M4
9054W	22	7	12	12	19	M5
9055S	22	7	12	12	19	M6
9056Z	27	7	14	13	20	M6
9057V	27	7	14	13	20	M8
9058R	32	8	15	15	23	M8
9059Y	32	8	15	15	23	M10
9060U	37	8	18	17	23	M8
9061Q	37	8	18	17	23	M10

**Material**

High impact resistant thermoplastic

**Standard colour**

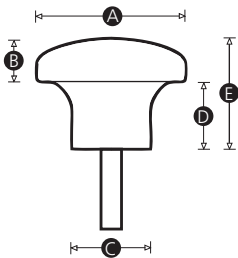
Black

**Finish**

Matt

**Male thread material**

Zinc plated steel



Part No.	A	B	C	D	E	Thread size	Thread length (mm)
11194U	22	7	12	12	19	M5	10
11195Q	22	7	12	12	19	M6	15
11197T	27	7	14	13	20	M6	15
11198P	27	7	14	13	20	M8	25
11199W	32	8	15	15	23	M8	25
11201Z	37	8	18	17	25	M8	25
11202V	37	8	18	17	25	M10	30

**Material**

High impact resistant thermoplastic

**Standard colour**

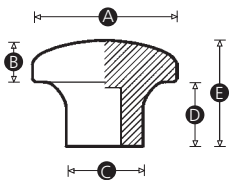
Black

**Finish**

Matt

**Bore**

Push-fit assembly



Part No.	A	B	C	D	E	To fit shaft diameter - H9 tolerance (mm)
9062X	22	7	12	12	19	5
9069R	37	8	18	17	23	10

**Material**

Duroplast

**Standard colour**

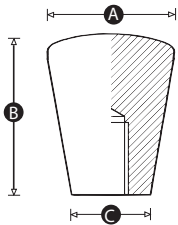
Black

**Finish**

Gloss finish

**Thread**

Moulded thread



Part No.	A	B	C	Thread size
812T	22	30	12	M6
814Q	22	30	12	M8
825Q	28	35	18	M8
822P	28	35	18	M10
833P	35	44	22	M10
836Q	35	44	22	M12

**Material**

Duroplast

**Standard colour**

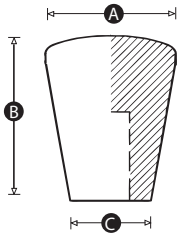
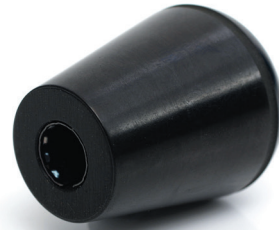
Black

**Finish**

Gloss finish

**Bore**

Push-fit assembly with tolerance ring



Part No.	A	B	C	To fit shaft diameter - H9 tolerance (mm)
3029U	22	30	12	6
1552S	28	35	18	8
1564P	35	44	22	10

**Material**

High impact resistant thermoplastic

**Standard colour**

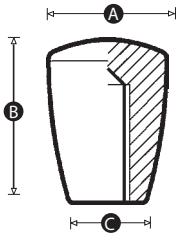
Black

**Finish**

Matt finish

**Thread**

Moulded thread



Part No.	A	B	C	Thread size
8735W	15	20	10	M5
8734P	15	20	10	M6
8518V	18	25	12	M6
8519R	18	25	12	M8
8520Y	24	33	16	M8
8521U	24	33	16	M10
8750R	28	38	18	M8
8749V	28	38	18	M10
8522Q	31	43	21	M10
8523X	31	43	21	M12



**Material**

High impact resistant thermoplastic

**Standard colour**

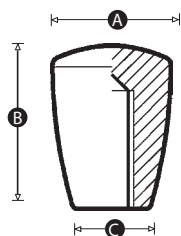
Black

**Finish**

Matt finish

**Bore**

Push-fit assembly



Part No.	A	B	C	To fit shaft diameter - H9 tolerance (mm)
8748Z	15	20	10	5
8530R	18	25	12	6
8531Y	24	33	16	8
8532U	24	33	16	10
8745P	28	38	18	10
8455U	31	43	21	10
8456Q	31	43	21	12

**Material**

High impact resistant thermoplastic

**Standard colour**

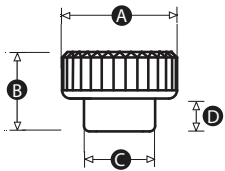
Black

**Finish**

Matt

**Female insert material**

Brass



Part No.	A	B	C	D	Thread size
14206V	16	13	11	5	M4
14207R	21	15	14	6	M5

**Material**

High impact resistant thermoplastic

**Standard colour**

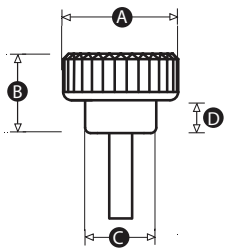
Black

**Finish**

Matt

**Male thread material**

Zinc plated steel



Part No.	A	B	C	D	Thread size	Thread length (mm)
12441P	16	13	11	5	M4	10
12512R	16	13	11	5	M6	15
10510R	21	15	14	6	M5	16

**Material**

High impact resistant thermoplastic

**Standard colour**

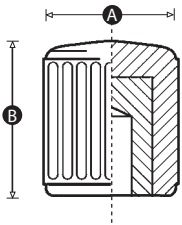
Black

**Finish**

Matt

**Female insert material**

Brass



Part No.	A	B	Thread size
679X	15	16	M4
680Q	15	16	M5
681U	15	16	M6
685P	20	22	M5
686S	20	22	M6
688P	25	34	M6
689T	25	34	M8

**Material**

High impact resistant thermoplastic

**Standard colour**

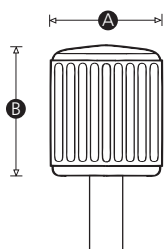
Black

**Finish**

Matt

**Male thread material**

Zinc plated steel



Part No.	A	B	Thread size	Thread length (mm)
1155W	15	16	M4	10
1156S	15	16	M5	10
9402Q	15	16	M5	20
7153Z	15	16	M6	10
9316T	15	16	M6	15
7149T	20	22	M5	15
1159R	20	22	M6	15
1161U	20	22	M6	25
2699Y	25	34	M6	25
7151W	25	34	M8	25

**Material**

High impact resistant thermoplastic

**Standard colour**

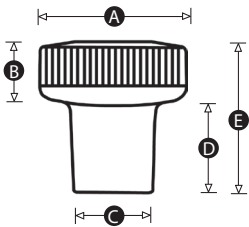
Black

**Finish**

Matt

**Female insert material**

Brass



Part No.	A	B	C	D	E	Thread size
15715Y	20	10	14	10	20	M4
15716U	20	10	14	10	20	M5
15717Q	25	10	17	15	25	M6
15718X	25	10	17	15	25	M8
15719T	30	11	18	19	30	M8
15720P	30	11	18	19	30	M10

**Material**

High impact resistant thermoplastic

**Standard colour**

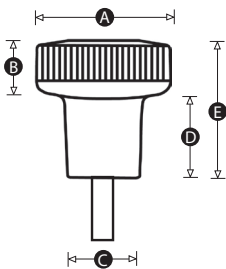
Black

**Finish**

Matt

**Male thread material**

Zinc plated steel



Part No.	A	B	C	D	E	Thread size	Thread length (mm)
15721W	20	10	14	10	20	M4	10
15722S	20	10	14	10	20	M5	16
15723Z	25	10	17	15	25	M6	16
15724V	25	10	17	15	25	M8	25
15725R	30	11	18	19	30	M8	20
15726Y	30	11	18	19	30	M10	30

**Material**

High impact resistant thermoplastic

**Standard colour**

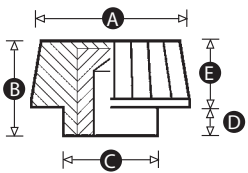
Black

**Finish**

Matt

**Female insert material**

Brass



Part No.	A	B	C	D	E	Thread size
8298V	15	11	10	3	8	M4
8299R	15	11	10	3	8	M5
8300Y	15	11	10	3	8	M6
8743X	19	12	12	3	9	M5
8744T	19	12	12	3	9	M6
8751Y	22	16	14	5	11	M6
8752U	22	16	14	5	11	M8
8513T	25	18	15	5	13	M8



**Material**

High impact resistant thermoplastic

**Standard colour**

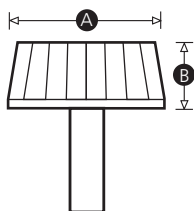
Black

**Finish**

Matt

**Male thread material**

Zinc plated steel



Part No.	A	B	Thread size	Thread length (mm)
6503S	15	8	M4	10
6504Z	15	8	M4	15
6505V	15	8	M5	10
6506R	15	8	M5	15
6508U	15	8	M6	10
6507Y	15	8	M6	15
8742Q	19	9	M6	10
8753Q	19	9	M6	15
8754X	19	9	M8	10
8755T	19	9	M8	15
8741U	22	11	M6	10
8740Y	22	11	M6	15
8739R	22	11	M6	20
8738V	22	11	M8	10
8737Z	22	11	M8	15

*Continued overleaf »*

« Continued from overleaf

Part No.	A	B	Thread size	Thread length (mm)
8736S	22	11	M8	20
7492W	25	13	M6	10
7329Z	25	13	M6	15
7489X	25	13	M6	20
7491P	25	13	M8	10
7330V	25	13	M8	15
7490T	25	13	M8	20

**Material**

High impact resistant thermoplastic

**Standard colour**

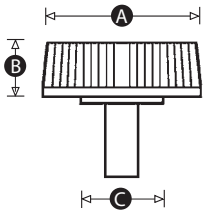
Black

**Finish**

Matt

**Male thread material**

Zinc plated steel



Part No.	A	B	C	Thread size	Thread length (mm)
7135U	21	9	10	M5	10
7133R	21	9	10	M5	20
4725V	21	9	10	M6	15
7131Z	21	9	10	M6	20



**Material**

Acetal thermoplastic

**Standard colour**

Red, grey or black

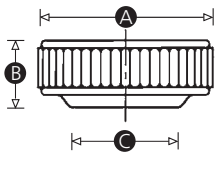
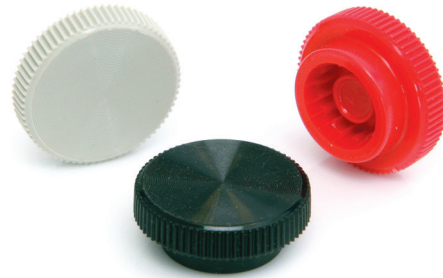
**Finish**

Spun matt finish

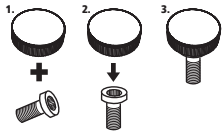
**Thread**

Simple push-fit assembly with a socket head cap screw.

Also available in imperial sizes (MOQs apply).



SELF ASSEMBLY:



Part No.	A	B	C	To fit socket head cap screw (Metric)
5009W	10	4	8	M3
5021U	10	4	8	M3
5015V	10	4	8	M3
5010R	13	5	10	M4
5022X	13	5	10	M4
5016Y	13	5	10	M4
5011U	16	6	12	M5
5023P	16	6	12	M5
5017Q	16	6	12	M5
5012X	19	8	14	M6
5024S	19	8	14	M6
5018T	19	8	14	M6
5013P	26	8	14	M6
5025V	26	8	14	M6
5019W	26	8	14	M6
5014S	26	10	16	M8
5026Y	26	10	16	M8
5020R	26	10	16	M8



**Material**

Acetal thermoplastic

**Standard colour**

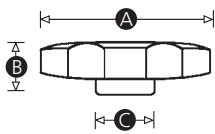
Red, grey or black

**Finish**

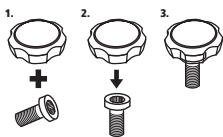
Textured matt finish

**Thread**

Simple push-fit assembly with a socket head cap screw.  
Also available in imperial sizes (MOQs apply).



SELF ASSEMBLY:



Part No.	A	B	C	To fit socket head cap screw (Metric)
5027Q	38	12	14	M6
5028T	38	10	17	M8
5031U	38	10	17	M8
5029W	38	13	20	M10
5032X	38	13	20	M10



**Material**

Acetal thermoplastic

**Standard colour**

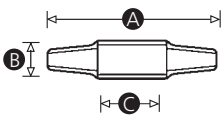
Red, grey or black

**Finish**

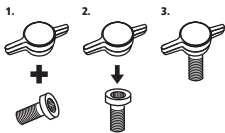
Textured matt finish

**Thread**

Simple push-fit assembly with a socket head cap screw.  
Also available in imperial sizes (MOQs apply).



SELF ASSEMBLY:



Part No.	A	B	C	To fit socket head cap screw (Metric)
5033P	26	7	12	M5
5045V	26	7	12	M5
5037Q	26	7	12	M5
5034S	30	8	13	M6
5042X	30	8	13	M6
5038T	30	8	13	M6
5035V	38	10	17	M8
5043P	38	10	17	M8
5039W	38	10	17	M8
5036Y	45	12	20	M10
5040R	45	12	20	M10

**Material**

Duroplast

**Standard colour**

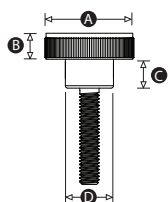
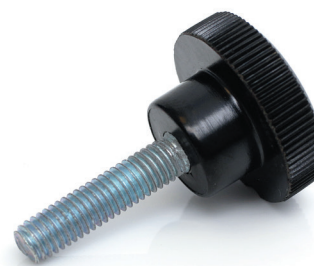
Black

**Finish**

Gloss

**Thread Material**

Zinc plated steel



Part No.	A	B	C	D	Thread size	Thread length (mm)
14264U	18	6	6	6	M4	20
14265Q	18	6	6	6	M5	15
14266X	18	6	6	6	M5	20
14267T	22	6	7	12	M5	10
14268P	22	6	7	12	M5	20
14269W	22	6	7	12	M6	10
14270S	26	7	7	15	M6	10
14271Z	26	7	7	15	M6	20
14272V	26	7	7	15	M8	20
14273R	26	7	7	15	M8	30

**Material**

Duroplast

**Standard colour**

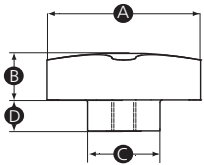
Black

**Finish**

Gloss

**Female insert material**

Brass



Part No.	A	B	C	D	E	Thread size
5080R	38	12	18	8	20	M6
11095U	38	12	18	8	20	M8
949Y	50	12	21	12	24	M8



**Material**

Duroplast

**Standard colour**

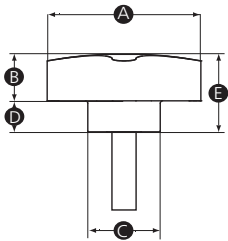
Black

**Finish**

Gloss

**Thread Material**

Zinc plated steel



Part No.	A	B	C	D	E	Thread size	Thread length (mm)
1261Q	38	12	18	8	20	M6	13
1263T	38	12	18	8	20	M6	25
2815W	38	12	18	8	20	M6	40
4467Y	50	12	21	12	25	M8	20
1277S	50	12	21	12	25	M8	25
4636X	50	12	21	12	25	M8	40
5398W	60	13	24	14	27	M10	40

**Material**

Duroplast

**Standard colour**

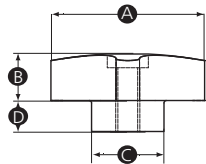
Black

**Finish**

Gloss

**Insert material**

Brass



Part No.	A	B	C	D	E	Thread size
1267P	38	12	18	8	20	M6
1268V	38	12	18	8	20	M8
1290V	60	13	24	14	27	M10

**Material**

Duroplast

**Standard colour**

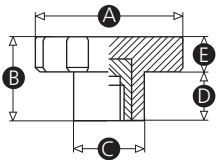
Black

**Finish**

Gloss

**Female insert material**

Brass



Part No.	A	B	C	D	E	Thread size
170U	50	29	25	17	12	M8
155P	50	29	25	17	12	M10

**Material**

High impact resistant thermoplastic

**Standard colour**

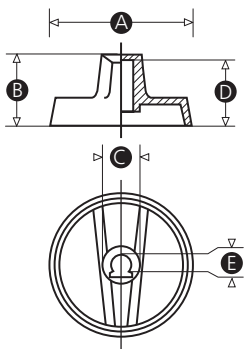
Black

**Finish**

Matt

**Shaft type**

Complete with clip to fit D-Shaft



Part No.	A	B	C	D	E	Shaft type	Bore size (mm)
6543X	40	20	11	18	5	D-Shaft	6

**Material**

High impact resistant thermoplastic

**Standard colour**

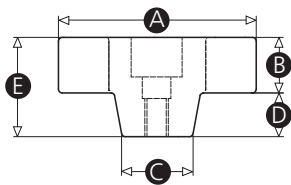
Black

**Finish**

Matt

**Insert material**

Brass



Part No.	A	B	C	D	E	Thread size
4514Q	50	14	18	11	25	M6

**Material**

High impact resistant thermoplastic

**Standard colour**

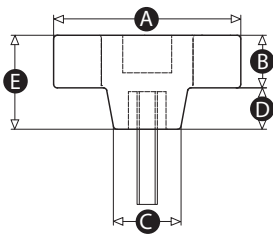
Black

**Finish**

Matt

**Male thread material**

Zinc plated steel



Part No.	A	B	C	D	E	Thread size	Thread length (mm)
4507P	50	14	18	11	25	M6	20
4506W	50	14	18	11	25	M8	25

**Material**

High impact resistant thermoplastic

**Standard colour**

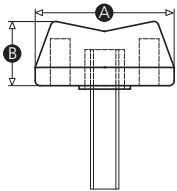
Black

**Finish**

Matt

**Male thread material**

Zinc plated steel



Part No.	A	B	Thread size	Thread length (mm)
11538T	28	13	M6	15
10577Y	28	13	M6	25

HD SS

**Material**

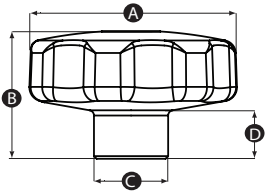
Stainless steel

**Finish**

Matt

**Thread**

Machined thread



Part No.	A	B	C	D	Thread size
12714X	40	24	14	8	M6
12715T	40	24	14	8	M8
12716P	50	31	18	10	M8
12717W	50	31	18	10	M10
12718S	60	39	20	14	M10
12719Z	60	39	20	14	M12



HD SS

**Material**

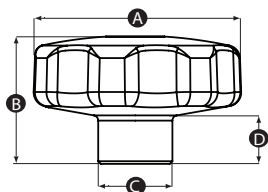
Stainless steel

**Finish**

Matt

**Thread**

Machined thread



Part No.	A	B	C	D	Thread size
12720V	40	24	14	8	M8
12721R	50	31	18	10	M10
12722Y	60	39	20	14	M12

**HD SS**

**Material**

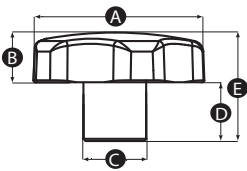
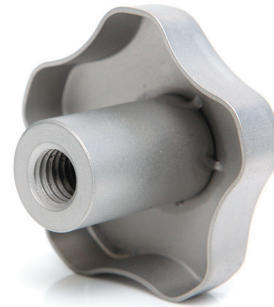
Pressed stainless steel spot welded stainless steel boss

**Finish**

Matt

**Thread**

Machined thread



Part No.	A	B	C	D	E	Thread size
12699R	40	12	14	12	24	M8
12700Y	50	14	18	18	31	M10
12701U	60	18	20	21	39	M12

**HD**

**Material**

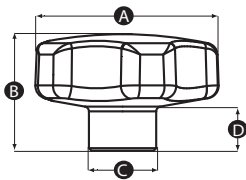
Aluminium

**Finish**

Highly polished

**Thread**

Machined thread



Part No.	A	B	C	D	Thread size
12702Q	40	24	14	8	M6
12703X	40	24	14	8	M8
12705P	50	31	18	10	M8
12704T	50	31	18	10	M10
12706W	60	39	20	14	M10
12707S	60	39	20	14	M12

**HD**

**Material**

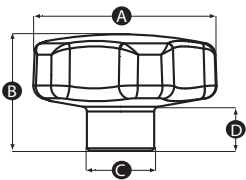
Aluminium

**Finish**

Highly polished

**Thread**

Machined thread



Part No.	A	B	C	D	Thread size
12708Z	40	24	14	8	M6
12709V	40	24	14	8	M8
12710R	50	31	18	10	M8
12711Y	50	31	18	10	M10
12712U	60	39	20	14	M10
12713Q	60	39	20	14	M12

**HD SS**

**Material**

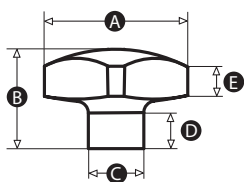
Stainless steel

**Finish**

Highly polished

**Thread**

Machined thread



Part No.	A	B	C	D	E	Thread size
12823Q	31	22	12	8	7	M6

**HD SS**

**Material**

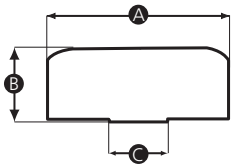
Stainless steel

**Finish**

Matt

**Thread**

Machined thread



Part No.	A	B	C	Thread size
11844Q	25	10	8	M6
11847P	36	15	12	M8

HD SS

**Material**

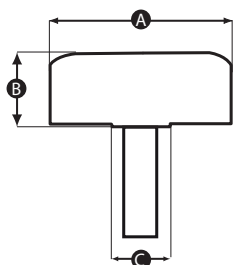
Stainless steel

**Finish**

Matt

**Male thread material**

Stainless steel thread



Part No.	A	B	C	Thread size	Thread length (mm)
11845X	25	10	8	M6	20
11848W	36	15	12	M8	32
11846T	36	1	12	M10	40

**HD SS**

**Material**

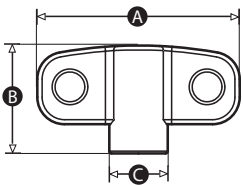
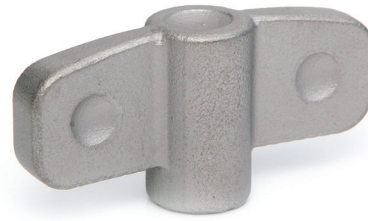
Stainless steel

**Finish**

Matt

**Thread**

Machined thread



Part No.	A	B	C	Thread size
11849S	45	24	13	M6
11850Z	45	24	13	M8
11852R	57	28	16	M8
11851V	57	28	16	M10



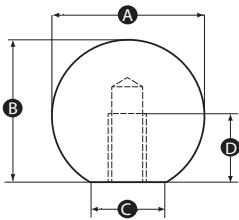
HD SS

**Material**

Stainless steel - 304

**Finish**

Highly polished



Part No.	A	B	C	D	Thread size
15323T	16	15	8	7	M4
15324P	16	15	8	7	M5
15325W	16	15	8	7	M6
15326S	20	18	12	9	M4
15327Z	20	18	12	9	M5
15328V	20	18	12	9	M6
15329R	25	23	15	11	M6
15330Y	25	23	15	11	M8
15331U	25	23	15	11	M10
15332Q	32	29	18	15	M6
15333X	32	29	18	15	M8
15334T	32	29	18	15	M10
15335P	38	35	22	18	M6
15336W	38	35	22	18	M8
15337S	38	35	22	18	M10
15338Z	44	37	32	20	M10
15339V	50	46	28	21	M10

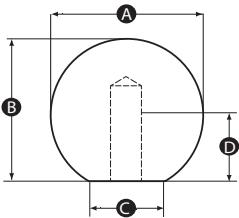
**HD SS**

**Material**

Stainless steel - 304

**Finish**

Highly polished

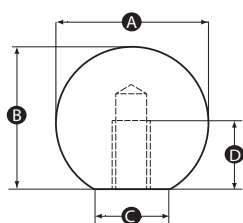


Part No.	A	B	C	D	Bore size (mm) - H7 Tolerance
15357P	16	15	8	10	4
15358W	16	15	8	10	5
15359S	20	18	12	12	5
15360Z	20	18	12	12	6
15361V	25	23	15	16	6
15362R	25	23	15	16	8
15363Y	32	29	18	20	6
15364U	32	29	18	20	8
15365Q	38	35	22	24	6
15366X	38	35	22	24	8
15367T	38	35	22	24	10
15368P	44	37	32	28	10

**HD**

**Material**  
Aluminium

**Finish**  
Highly polished



Part No.	A	B	C	D	Thread size
15340R	16	15	8	7	M4
15341Y	16	15	8	7	M5
15342U	16	15	8	7	M6
15343Q	20	18	12	9	M4
15344X	20	18	12	9	M5
15345T	20	18	12	9	M6
15346P	25	23	15	11	M6
15347W	25	23	15	11	M8
15348S	25	23	15	11	M10
15349Z	32	29	18	15	M6
15350V	32	29	18	15	M8
15351R	32	29	18	15	M10
15352Y	38	35	22	18	M6
15353U	38	35	22	18	M8
15354Q	38	35	22	18	M10
15355X	44	37	32	20	M10
15356T	50	46	28	21	M10

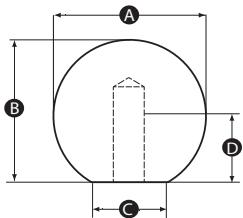
**HD**

**Material**

Aluminium

**Finish**

Highly polished



Part No.	A	B	C	D	Bore size (mm) - H7 Tolerance
15369W	16	15	8	10	4
15370S	16	15	8	10	5
15371Z	20	18	12	12	5
15372V	20	18	12	12	6
15373R	25	23	15	16	6
15374Y	25	23	15	16	8
15375U	32	29	18	20	6
15376Q	32	29	18	20	8
15377X	38	35	22	24	6
15378T	38	35	22	24	8
15379P	38	35	22	24	10
15380W	44	37	32	28	10



A large grid area for taking notes, consisting of many small squares. The grid is approximately 30 columns wide and 40 rows high, providing a structured space for writing or drawing.

## Modifications & Custom Components

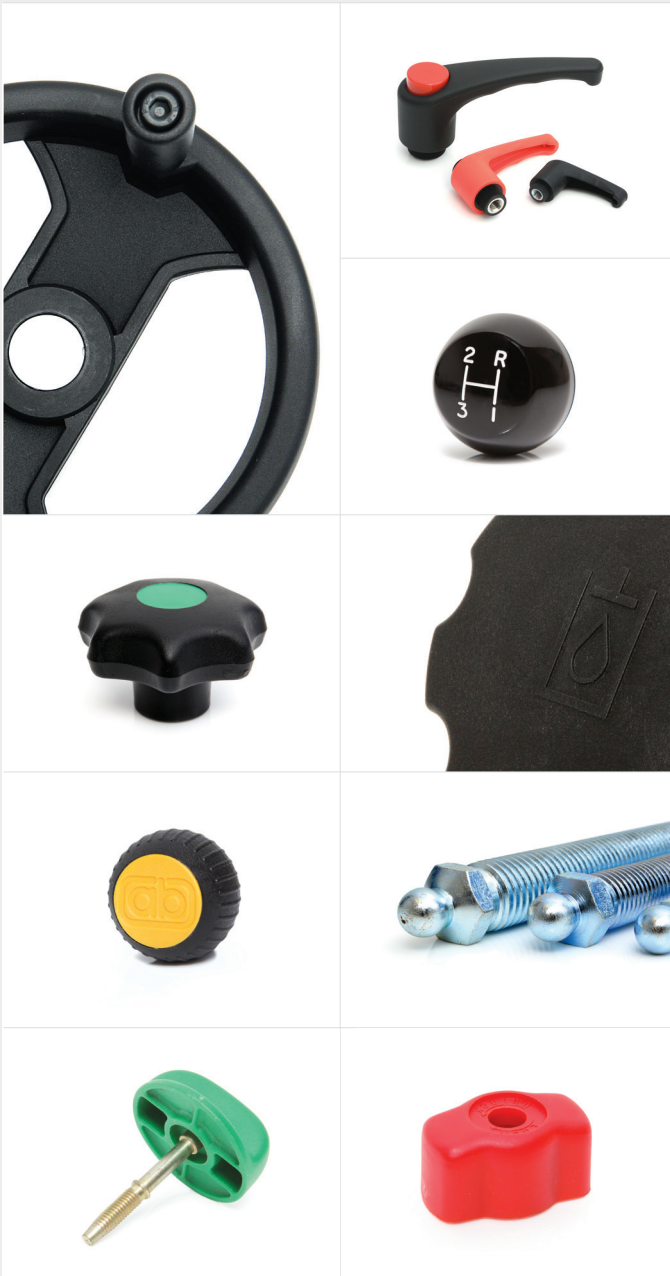
Diverse manufacturing capabilities and experienced on-site technical personnel allows Rencol Components to offer a wide range of product modifications and custom product solutions. We regularly adapt standard components or manufacture custom products to suit our customers' specific requirements. New tooling can be produced quickly and cost effectively with a typical MOQ of just 500 pieces.

### Manufacturing Processes

Plastic & Metal Injection Moulding / Die casting / Machining / Forging / Stamping / Rapid Prototyping / 3D Printing

### Modifications & Custom Options

Thread size & length / RAL Colours / Engraving / Pad-Printing & Screen-Printing / TPE Over mould / Materials / Finishes / Logos





## **Rencol** COMPONENTS

**Head Office (UK):**

Unit 2 Avonbridge Trading Estate  
Atlantic Road  
Avonmouth  
Bristol BS11 9QD  
United Kingdom

**Tel:** +44 (0) 117 916 0090

**Fax:** +44 (0) 117 982 2235

**Email:** [sales@rencol.com](mailto:sales@rencol.com)

**Website:** [www.rencol.com](http://www.rencol.com)

**Office opening hours:**

Monday to Friday  
8.30 AM to 5.00 PM (GMT)