



Fixing type

Threaded inserts for fixing with screws from below.

Material

Reinforced nylon (15% glass filled PA6)

Standard handle colour

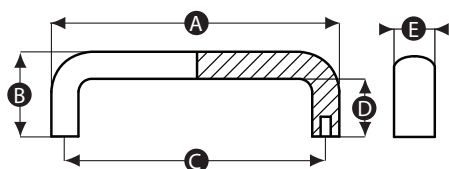
Black

Finish

Matt

Thread

Brass inserts



| Part No. | A | B | C | D | E | Thread size |
|----------|-----|----|-----|----|----|-------------|
| 12550T | 107 | 41 | 94 | 29 | 20 | M5 |
| 12551P | 134 | 50 | 117 | 34 | 25 | M6 |
| 12552W | 137 | 50 | 120 | 34 | 25 | M6 |
| 12553S | 148 | 50 | 132 | 34 | 25 | M6 |
| 12554Z | 168 | 58 | 150 | 40 | 29 | M8 |
| 12555V | 197 | 58 | 179 | 40 | 29 | M8 |